



San Antonio River (Texas, USA)

International Resilient Rivers Blueprint

The Journey of our River

San Antonio River Introduction

RESILIENT RIVERS BLUEPRINT

PROTECTING OUR RIVERS FOR
FUTURE GENERATIONS



International RiverFoundation • IW:Learn
Healthy Land and Water • Deloitte
University of Maryland Center for Environmental Science

Background

- Changing community relationships with rivers
 - Population
 - Climate
- Unprecedented challenges for river managers
- Need
 - Resilience to disturbances
 - New way to manage rivers
 - Transformation in thinking
 - Protection of rivers for current *and* future generations
 - Subtle but crucial differences in management priorities

San Antonio River Introduction

RESILIENT RIVERS BLUEPRINT

PROTECTING OUR RIVERS FOR
FUTURE GENERATIONS



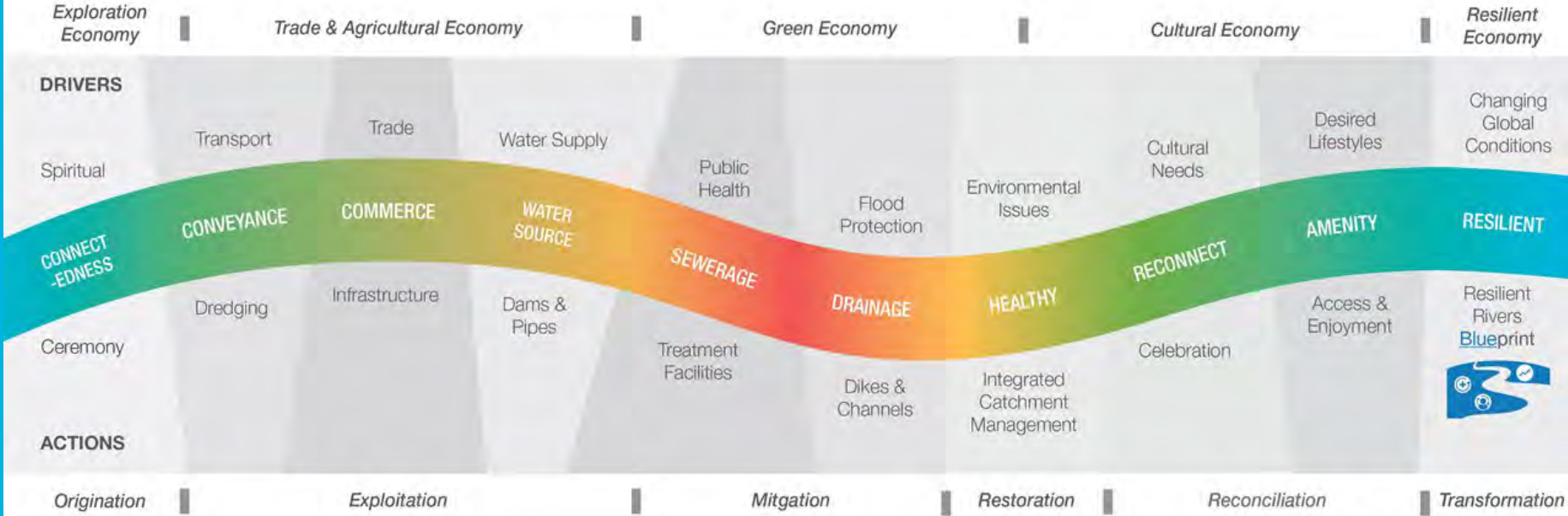
International RiverFoundation • IW:Learn
Healthy Land and Water • Deloitte
University of Maryland Center for Environmental Science

Blueprint Approach

- Partners:
 - International RiverFoundation
 - IW: Learn
 - Healthy Land and Water
 - Deloitte
 - University of Maryland Center for Environmental Science
- Four components:
 - River Journey
 - River Personality
 - River Resilience Report card
 - Resilient Rivers Hub

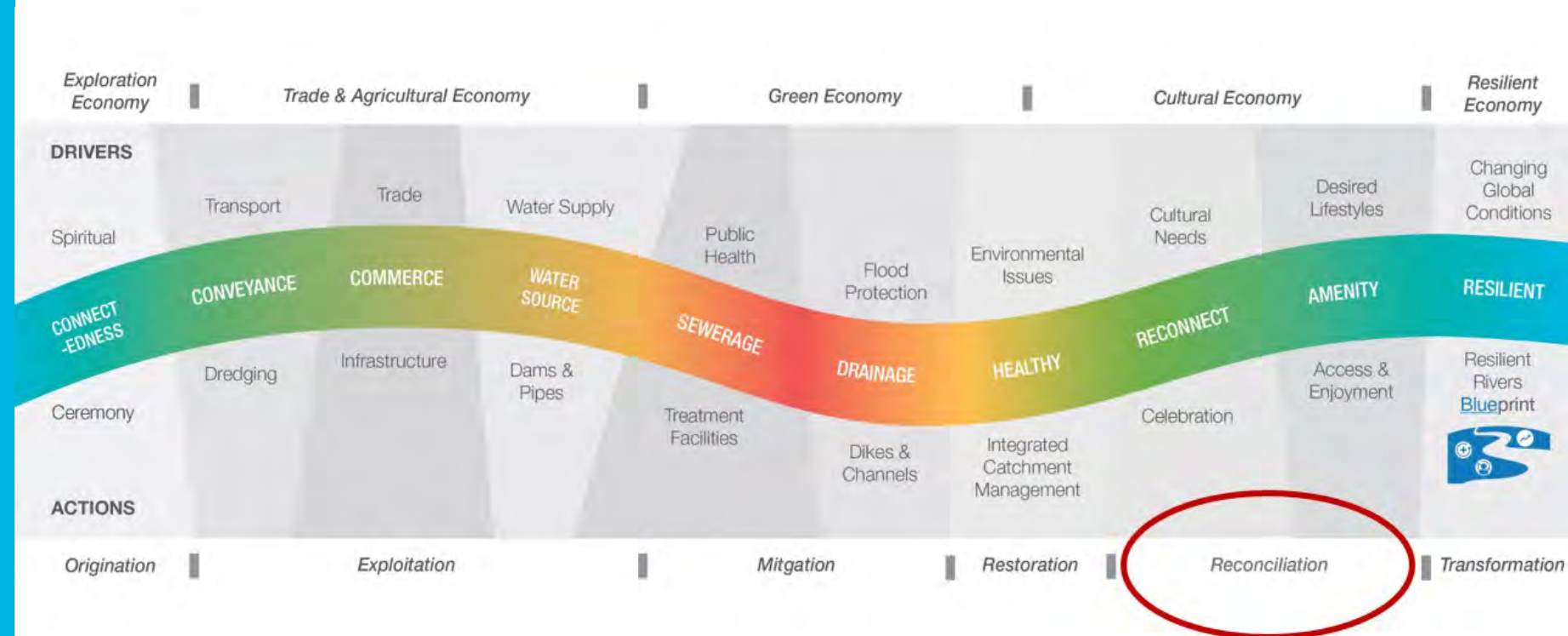


The Resilient Rivers Journey

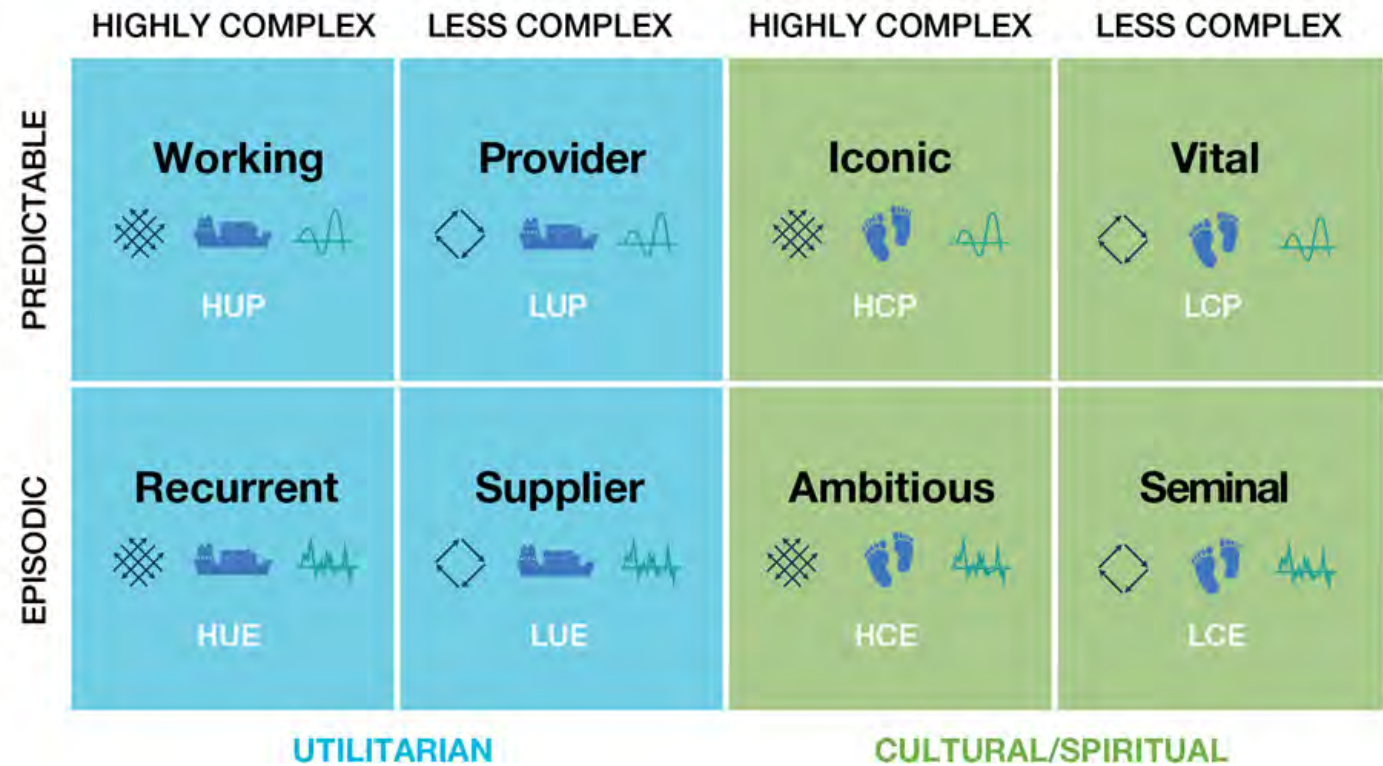


River Journey

- Survey Respondents:
 - 4 River Authority staff
 - 5 Environmental Advisory Committee members
 - Two urban
 - Three rural
- Result: All Reconciliation
 - Reconnection
 - Amenity

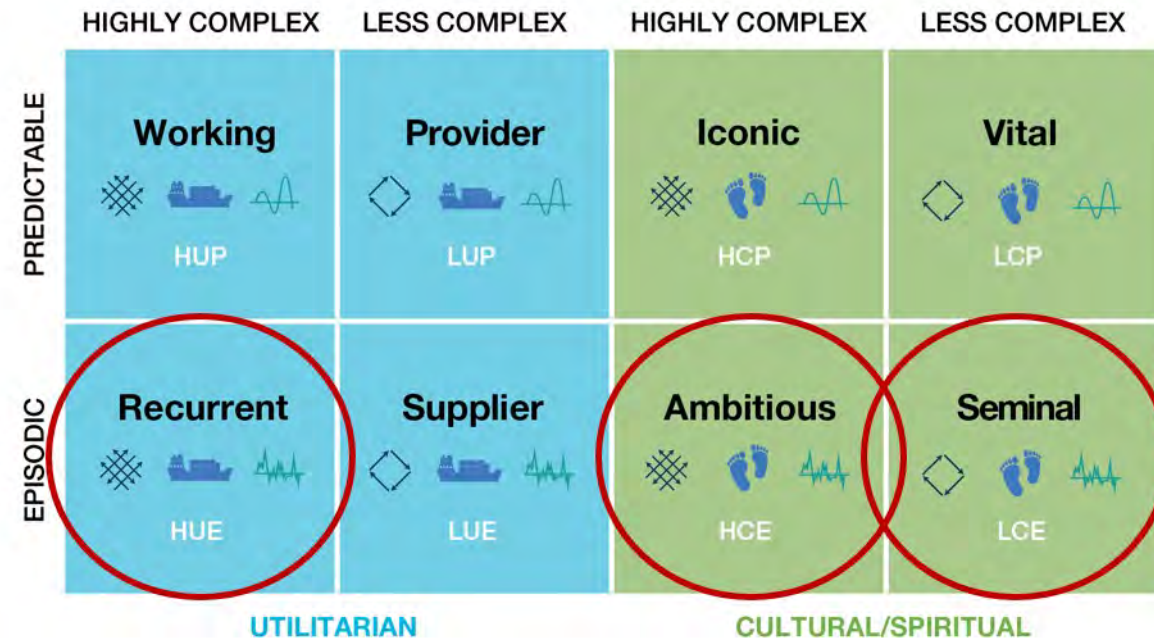


River Personality



River Personality

- Results:
 - All Episodic
 - Otherwise, multiple personalities:
 - 3 Utilitarian: All Recurrent
 - 6 Cultural/Spiritual:
 - 2 Ambitious
 - 4 Seminal
 - Not aligned with urban vs. rural respondents

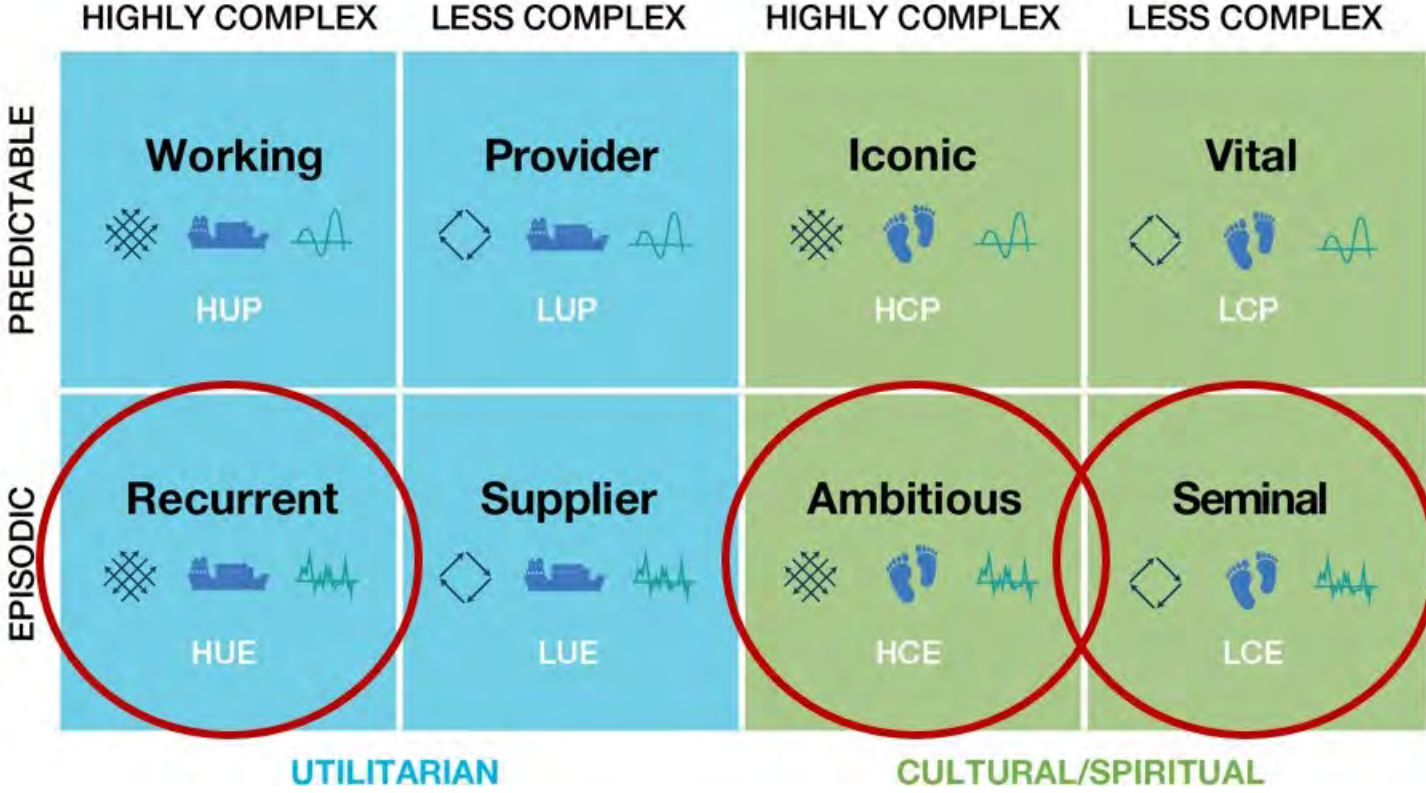


River Personality

For Comparison

	HIGHLY COMPLEX	LESS COMPLEX	HIGHLY COMPLEX	LESS COMPLEX
PREDICTABLE	HUP Working Rhine	LUP Provider Pasig	HCP Iconic Ganges	LCP Vital Amazon
EPISODIC	HUE Recurrent Mississippi	LUE Supplier Hudson	HCE Ambitious Brisbane	LCE Seminal Whangawehi
	UTILITARIAN		CULTURAL/SPIRITUAL	

Discussion



Questions?

Karen Bishop

Sustainable Infrastructure
(210) 302-3642

kbishop@sariverauthority.org



SAN ANTONIO
RIVER AUTHORITY

