



FY22 Clean Rivers Program Update

September 17, 2021



FY22/23 CRP Budget

- An additional \$335,920 on top of the original budget of \$395,540, FY22/23 budget = \$731,460 (pending TCEQ final approval)
- Increased capital will fund new IC and ammonia meter as well as relieve River Authority Stream Monitoring dollars



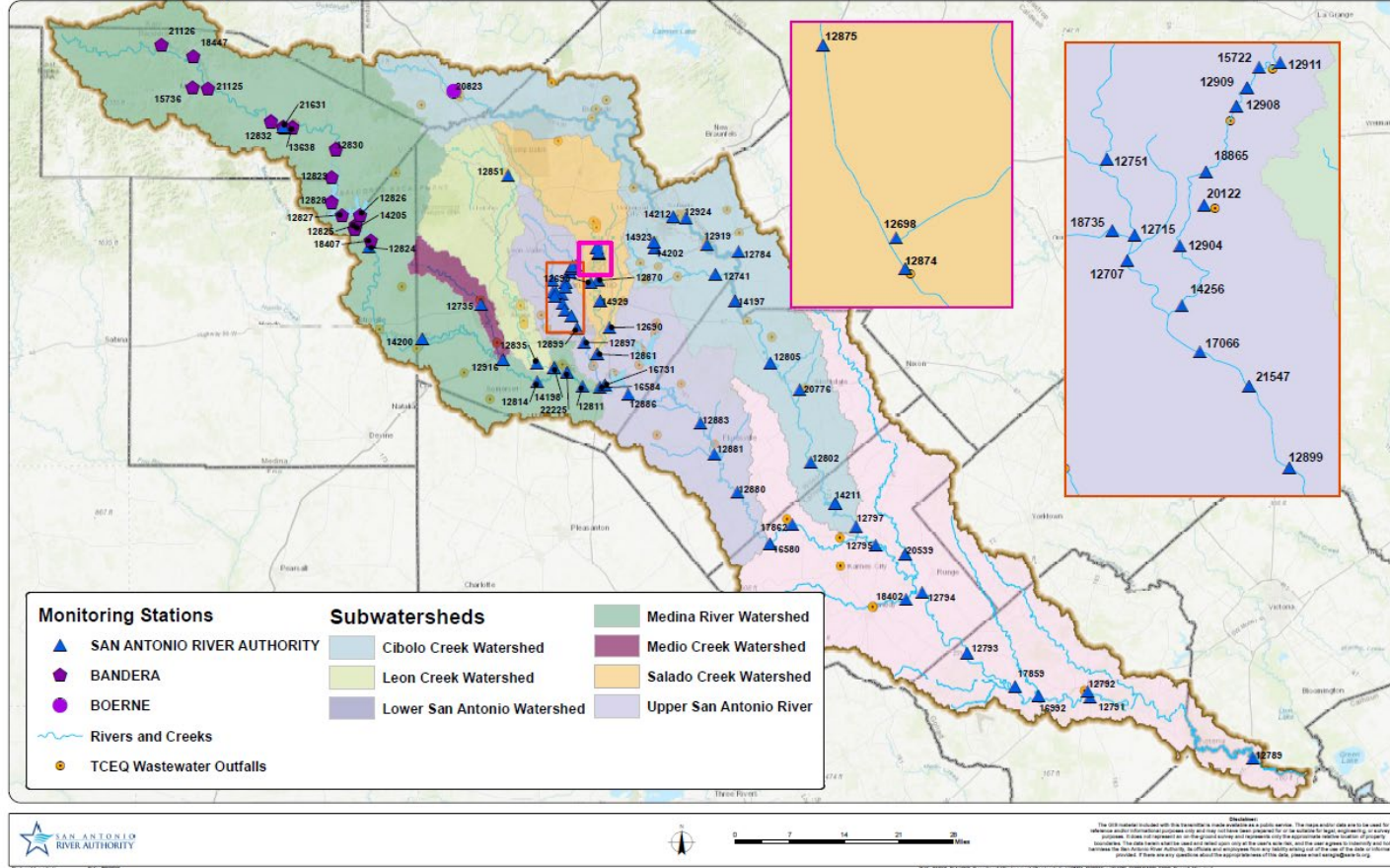
FY22/23 CRP Budget

BUDGET CATEGORIES	Task 1 Project Admin	Task 2 Qual Assurance	Task 3 WQ Monitoring	Task 4 Data Mgmt.	Task 5 Data Analysis & Rpt	Task 6 Stakeholder	FY22/23 TOTAL
a. Personnel/Salary	\$25,000.00	\$27,000.00	\$339,527.56	\$22,000.00	\$15,000.00	\$5,500.00	\$434,027.56
b. Fringe Benefits (38% of a.)	\$9,500.00	\$10,260.00	\$129,020.48	\$8,360.00	\$5,700.00	\$2,090.00	\$164,930.48
c. Travel	-	-	\$300.00	-	-	-	\$300.00
d. Supplies	-	-	\$27,999.20	-	-	-	\$27,999.20
e. Equipment	-	-	\$57,800.00	-	-	-	\$57,800.00
f. Contractual	-	-	-	-	-	-	\$0.00
g. Other	-	-	-	-	\$3,000.00	-	\$3,000.00
h. Total Direct Costs (sum a-g)	\$34,500.00	\$37,260.00	\$554,647.24	\$30,360.00	\$23,700.00	\$7,590.00	\$688,057.24
i. Indirect costs (10% of a.)	\$2,500.00	\$2,700.00	\$33,952.76	\$2,200.00	\$1,500.00	\$550.00	\$43,402.76
j. Total Reimbursable Costs (h+i)	\$37,000.00	\$39,960.00	\$588,600.00	\$32,560.00	\$25,200.00	\$8,140.00	\$731,460.00



FY22 Coordinated Monitoring

FY 2022 Monitoring Map



2022 Monitoring in the SAR Basin

FY21				Watershed	FY22				Comments
SARA CRP	Partners	Total Sites Monitored	Biological Nekton		SARA CRP	Partners	Total Sites Monitored	Biological Nekton	
12	1-GBRA	13	4	Segment 1901: Lower San Antonio River	11	1-GBRA	12	4	Dropped 1 site because of TXDOT project; added 1 Recreation bacteria site
12	1-TCEQ	13	4	Segment 1902: Lower Cibolo Creek	10	1-TCEQ	11	4	Dropped 2 sites following stormwater decommission
7	0	7	2	Segment 1903: Lower Medina River	6	0	7	2	Dropped 1 site; added full parameters at an adjacent site
0	5-BCRAGD	5	0	Segment 1904: Medina Lake	0	5-BCRAGD	5	0	
0	8-BCRAGD	8	2	Segment 1905: Upper Medina River	0	8-BCRAGD	8	2	
3	2-TCEQ	5	2	Segment 1906: Lower Leon Creek	2	3-TCEQ	5	2	TCEQ took one site from SARA
1	0	1	0	Segment 1907: Upper Leon Creek	1	0	1	0	
0	2-TCEQ 1-Boerne	3	0	Segment 1908: Upper Cibolo Creek	0	2-TCEQ 1-Boerne	3	0	
0	1-BCRAGD	1	0	Segment 1909: Medina Diversion Lake	0	2-BCRAGD	2	0	Added 1 site
7	0	7	4	Segment 1910: Salado Creek	8	0	8	4	Added 1 site
21	0	21	6	Segment 1911: Upper San Antonio River	21	0	21	6	
2	0	2	2	Segment 1912: Medio Creek	2	0	2	2	
3	0	3	0	Segment 1913: Mid Cibolo Creek	3	0	3	0	
68	21	89	26	TOTAL	64	23	87	26	



2022 CRP San Antonio River Basin Update Report

- Update report provides a brief view of activities in the SAR Basin
- Water quality monitoring, impairments and concerns
- Projects and studies
- Stakeholder Participation & Public Outreach

San Antonio River Basin 2022 Basin Highlight Update Report



Figure 1: Warmouth, biological event at Station 12870 Salado Creek at Gumbler Road



Figure 2: The preparation of this report was financed through grants from and in cooperation with the Texas Commission on Environmental Quality

Basin Overview

The San Antonio River Basin is in south central Texas. While the San Antonio River Authority's political jurisdiction is comprised of four counties (Bexar, Wilson, Karnes and Goliad), the actual basin consists of all or part of 13 counties. The basin extends north into the Texas Hill country in the lower portion of Kerr County and continues southeast to the Guadalupe River about 10 miles from San Antonio Bay. Most of the basin is rural, except Bexar County, which is in the center of the basin and consists of the City of San Antonio and various smaller municipalities. Five major perennial streams flow into the San Antonio River: Cibolo Creek, Leon Creek, Medina River, Medio Creek and Salado Creek. In the [TCEQ 2020 Integrated Report \(IR\)](#) there were 13 classified and 23 unclassified stream segments (tributaries) assessed in the San Antonio River Basin. A total of 16 impairments were identified in the classified stream segments and a total of 18 impairments were identified in the unclassified stream segments of the San Antonio River Basin. Elevated levels of *E. coli* remain the primary water quality issue and major cause of impairments in the basin. Of the 36 waterbodies assessed in the San Antonio River Basin, 58% are considered impaired based on *E. coli* concentrations above the primary contact recreation standards allowed under the [Texas Surface Water Quality Standards \(TSWQS\)](#). Depressed dissolved oxygen (DO), fish and benthic macroinvertebrate communities, and fish consumption restrictions in the Lower Leon Creek were also identified.



2022 CRP San Antonio River Basin Update Report Timeline

- Draft report delivered to EAC – January meeting
- EAC comments due – February 1, 2022
- Draft Report – February 28, 2022
- Final Report – May 15, 2022
- Posted to webpage – June 30, 2022



Longnose gar from 12792 – San Antonio River at Southern Pacific Railroad Bridge in Goliad



FY22 EAC Steering Committee Meeting

- Meets each year to discuss water/bio quality and trends
- Discusses priorities within the watershed

Item	Due Date
Introduce Steering Committee Meeting at Q2 EAC Meeting, decide on tentative meeting date (to be approved by TCEQ)	9/17/2021
Notify Steering Committee members of final date, location, priority items, and requests for presentations a minimum of 45 days prior to set meeting date	2/12/2021
Send final agenda to Steering Committee members a minimum of 15 days in advance	3/16/2021
Steering Committee Meeting	3/31/2021



American eel from 16580 – San Antonio River at Conquista Crossing in Falls City, TX



Questions?



Chris Vaughn
Senior Aquatic Biologist
San Antonio River Authority
cvaughn@sariverauthority.org