



# FY22 Clean Rivers Program Quarter 2 Environmental Advisory Committee Meeting

December 10, 2021



# CRP Overview

**Established in 1991 by the 72nd Legislature enactment of Senate Bill 818.**

**Coordinates the regional monitoring resources to identify and address the water quality issues in the San Antonio River Basin.**

**SARA, TCEQ, BCRA GD, and the City of Boerne monitor water quality in the San Antonio River Basin.**

**Provide quality assured data to the TCEQ for use in water quality decision making.**



# CRP Objectives

- Provide Quality-Assured Data to the TCEQ for Use in Water Quality Decision-Making
- Identify and Evaluate Water Quality Issues
- Maintain Efficient Use of Public Funds
- Adapt Program to Emerging Water Quality Issues



Biologists, Austin Davis, Angie Rapacz, and Chris Vaughn after capturing a burrhead chub from 12792 SAR @ Southern Pacific RR Bridge





# FY22 EAC Steering Committee Meeting

- Meets each year to discuss water and biological quality in the basin
- Discusses priorities within the watershed
- Proposed dates – March 11, 2022 & March 18, 2022 (TCEQ approved)

Item	Due Date
Introduce Steering Committee Meeting at Q2 EAC Meeting, decide on tentative meeting date(s) (to be approved by TCEQ)	12/10/2021
Notify Steering Committee members of final date, location, priority items, and requests for presentations a minimum of 45 days prior to set meeting date	Mid-February 2022
Send final agenda to Steering Committee members a minimum of 15 days in advance	Mid-March 2022
Steering Committee Meeting	Late March



Staff performing a fish survey at 14200 Medina River @ CR 484



# FY23 CRP Coordinated Monitoring Meeting

- Normally held in early spring (March/April)
- Adapts spatial and temporal distribution of monitoring efforts based on data
- Leverage funds, maximizing regional efforts, prevents duplication of efforts
- Proposed dates are April 7<sup>th</sup> or 14<sup>th</sup>, 2022 (TCEQ approved)
- <https://cms.lcra.org/>

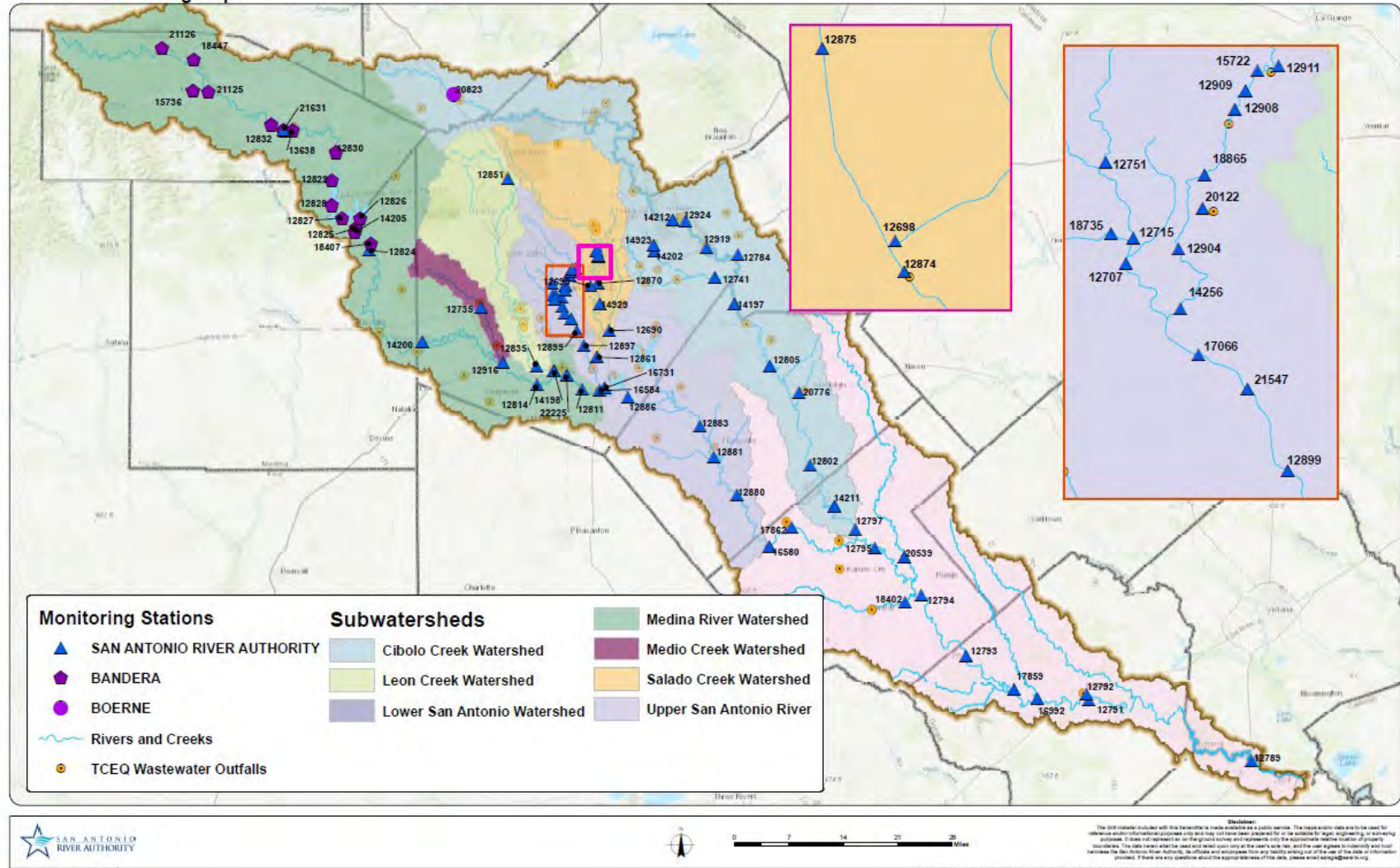


Biologist, Zoe Nichols with a Guadalupe bass from the Mission Reach of the SAR





# FY 2022 Monitoring Map



# CRP Coordinated Monitoring Schedule

FY21				Watershed	FY22				Comments
SARA CRP	Partners	Total Sites Monitored	Biological Nekton		SARA CRP	Partners	Total Sites Monitored	Biological Nekton	
12	1-GBRA	13	4	Segment 1901: Lower San Antonio River	11	1-GBRA	12	4	Dropped 1 site because of TXDOT project; added 1 Recreation bacteria site
12	1-TCEQ	13	4	Segment 1902: Lower Cibolo Creek	10	1-TCEQ	11	4	Dropped 2 sites following stormwater decommission
7	0	7	2	Segment 1903: Lower Medina River	6	0	7	2	Dropped 1 site; added full parameters at an adjacent site
0	5-BCRAGD	5	0	Segment 1904: Medina Lake	0	5-BCRAGD	5	0	
0	8-BCRAGD	8	2	Segment 1905: Upper Medina River	0	8-BCRAGD	8	2	
3	2-TCEQ	5	2	Segment 1906: Lower Leon Creek	2	3-TCEQ	5	2	TCEQ took one site from SARA
1	0	1	0	Segment 1907: Upper Leon Creek	1	0	1	0	
0	2-TCEQ 1-Boerne	3	0	Segment 1908: Upper Cibolo Creek	0	2-TCEQ 1-Boerne	3	0	
0	1-BCRAGD	1	0	Segment 1909: Medina Diversion Lake	0	2-BCRAGD	2	0	Added 1 site
7	0	7	4	Segment 1910: Salado Creek	8	0	8	4	Added 1 site
21	0	21	6	Segment 1911: Upper San Antonio River	21	0	21	6	
2	0	2	2	Segment 1912: Medio Creek	2	0	2	2	
3	0	3	0	Segment 1913: Mid Cibolo Creek	3	0	3	0	
68	21	89	26	TOTAL	64	23	87	26	



# 2022 Integrated Report (IR)

- Texas 303(d) List
- Index of Water Quality Impairments
- Water Bodies Evaluated
- Water Body Assessments by Basin
- Supplemental Data for Reservoir Nutrient Assessment
- Water Bodies with Concerns for Use Attainment and Screening Levels
- Potential Sources of Pollution for Impairments and Concerns
- New Listings and De-listings
- Guidance for Assessing and Reporting Surface Water Quality in Texas

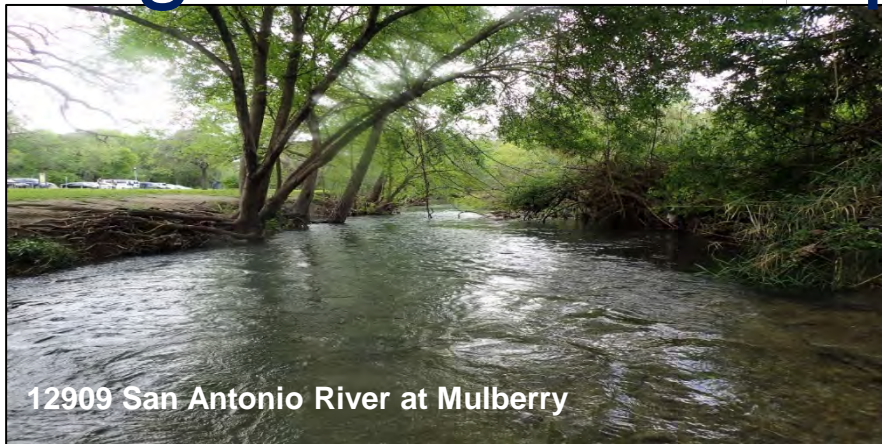


Biologist, Austin Davis with a grey redhorse from 12735 Medio Creek @ Hidden Valley





# Segment 1911 – Upper San Antonio River





# Segment 1911 – Upper San Antonio River



12751 Martinez Creek at Ruiz

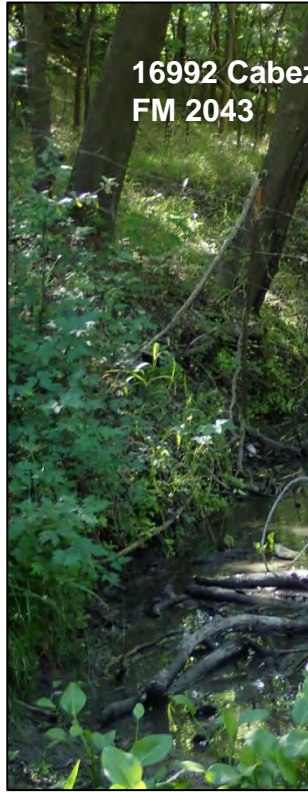


18735 Apache Creek at Brazos





# Segment 1901 – Lower San Antonio River





# Segment 1905 – Upper Medina River



# Segment 1904 Medina Lake





# 1909 Medina Diversion Lake





# Segment 1903 Lower Medina River





# Segment 1913 Mid Cibolo Creek



12924 Mid Cibolo Creek Schaeffer Road



14212 Mid Cibolo Upstream WWTP





# Segment 1902 Lower Cibolo Creek



14197 Cibolo Creek Scull Crossing

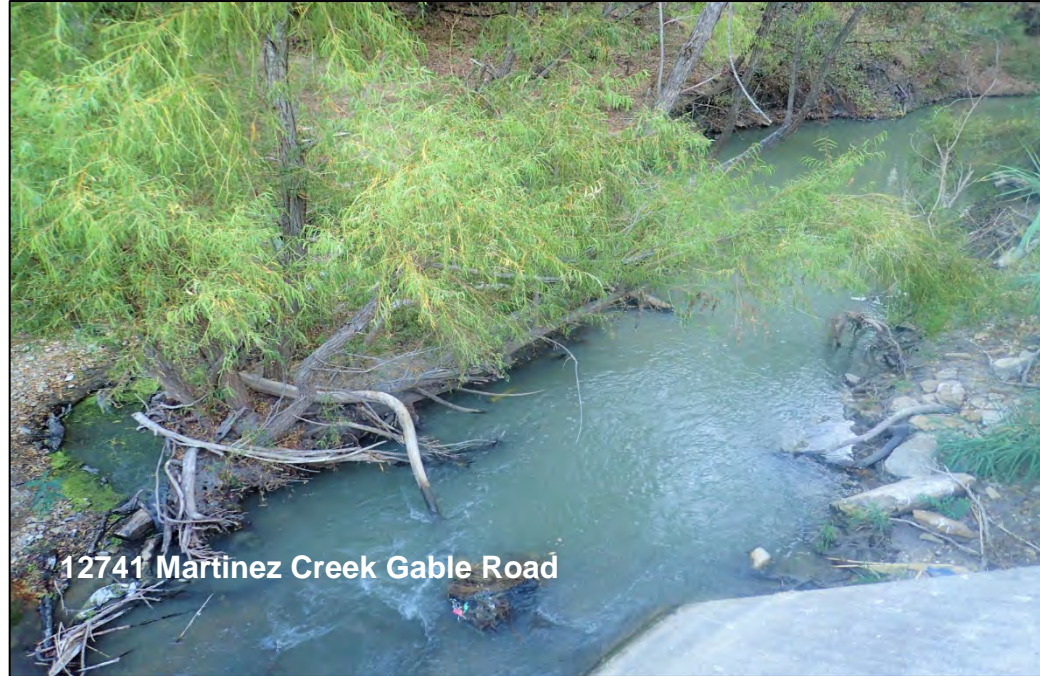


12802 Cibolo Creek CR 541





# Segment 1902 Lower Cibolo Creek



12741 Martinez Creek Gable Road





# Segment 1910 Salado Creek





# Segment 1912 Medio Creek



12735 Medio Creek at US 90W



12916 Hidden Valley Campground Medio Creek





# Segment 1907 Upper Leon Creek & 1906 Lower Leon Creek



12851 Upper Leon Creek Raymond Russel Park



14198 Leon Creek Upstream Leon Creek WWT





# 2022 CRP San Antonio River Basin Update Report

- Update report provides a brief view of activities in the SAR Basin
- Water quality monitoring, impairments and concerns
- Projects and studies
- Stakeholder Participation & Public Outreach

## San Antonio River Basin 2022 Basin Highlight Update Report



Figure 1: Warmouth, biological event at Station 12870 Salado Creek at Gumbler Road



Figure 2: The preparation of this report was financed through grants from and in cooperation with the Texas Commission on Environmental Quality

### Basin Overview

The San Antonio River Basin is in south central Texas. While the San Antonio River Authority's political jurisdiction is comprised of four counties (Bexar, Wilson, ~~Karnes~~ and Goliad), the actual basin consists of all or part of 13 counties. The basin extends north into the Texas Hill country in the lower portion of Kerr County and continues southeast to the Guadalupe River about 10 miles from San Antonio Bay. Most of the basin is rural, except Bexar County, which is in the center of the basin and consists of the City of San Antonio and various smaller municipalities. Five major perennial streams flow into the San Antonio River: Cibolo Creek, Leon Creek, Medina River, Medio Creek and Salado Creek. In the [TCEQ 2020 Integrated Report \(IR\)](#) there were 13 classified and 23 unclassified stream segments (tributaries) assessed in the San Antonio River Basin. A total of 16 impairments were identified in the classified stream segments and a total of 18 impairments were identified in the unclassified stream segments of the San Antonio River Basin. Elevated levels of *E. coli* remain the primary water quality issue and major cause of impairments in the basin. Of the 36 waterbodies assessed in the San Antonio River Basin, 58% are considered impaired based on *E. coli* concentrations above the primary contract recreation standards allowed under the [Texas Surface Water Quality Standards](#) (TSWQS). Depressed dissolved oxygen (DO), fish and benthic macroinvertebrate communities, and fish consumption restrictions in the Lower Leon Creek were also identified.



# 2022 CRP San Antonio River Basin Update Report Timeline

- Draft report delivered to EAC mid-January
- EAC comments due – February 15, 2022
- Draft Report – February 15, 2022
- Final Report – May 15, 2022
- Posted to webpage – June 30, 2022



Biologist, Steve Bittner releasing a Guadalupe bass in the Mission Reach of the SAR.





# Questions?

Chris Vaughn  
210-302-3651  
[cvaughn@sariverauthority.org](mailto:cvaughn@sariverauthority.org)

