



Environmental Investigations

Environmental Advisory Committee (EAC) Meeting

June 10, 2022



Categories

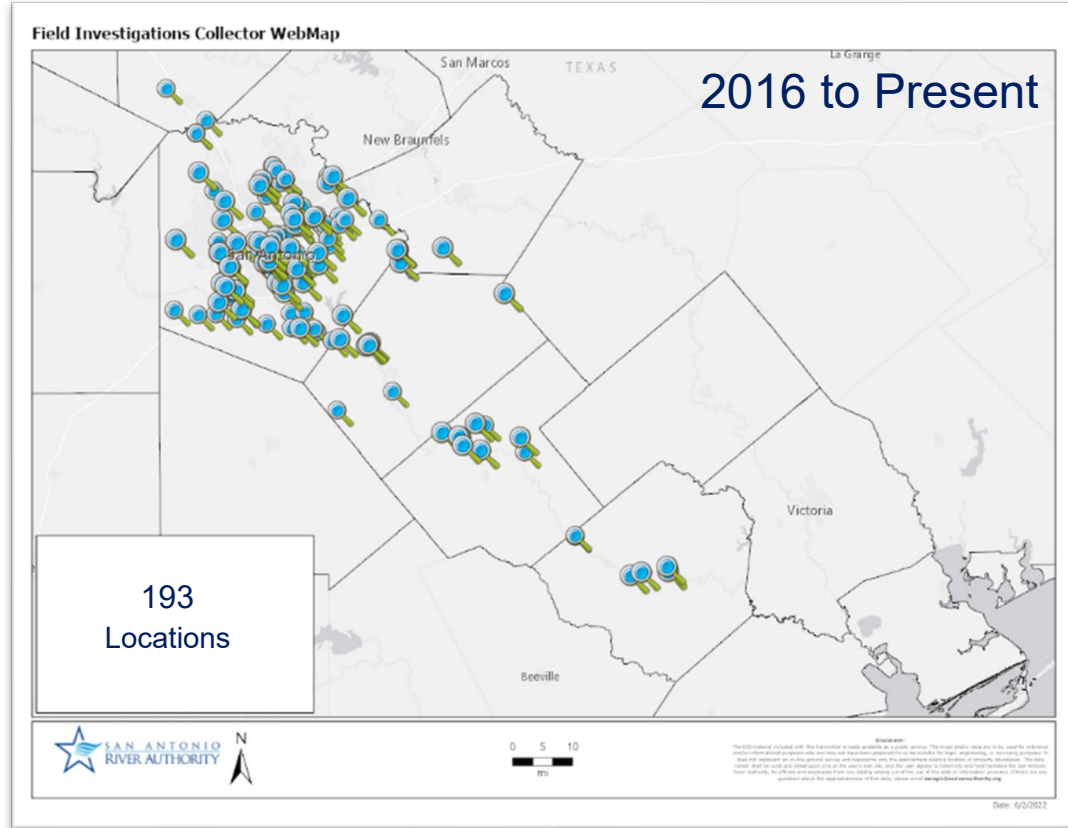
- Environmental/Pollution Investigations
- Surveillance and Patrol of the Watershed
- Emergency Spill Response
- Pipeline Crossings
- Phase I Environmental Site Assessments (ESAs)



GIS Collector WebMap

Categories:

- Water Quality
- Sewage Overflow
- Illegal Dumping
- Chemical or Fuel Spill
- Floodplain Violation
- Fish Kills
- Natural Features
- Other



Environmental/Pollution Investigations

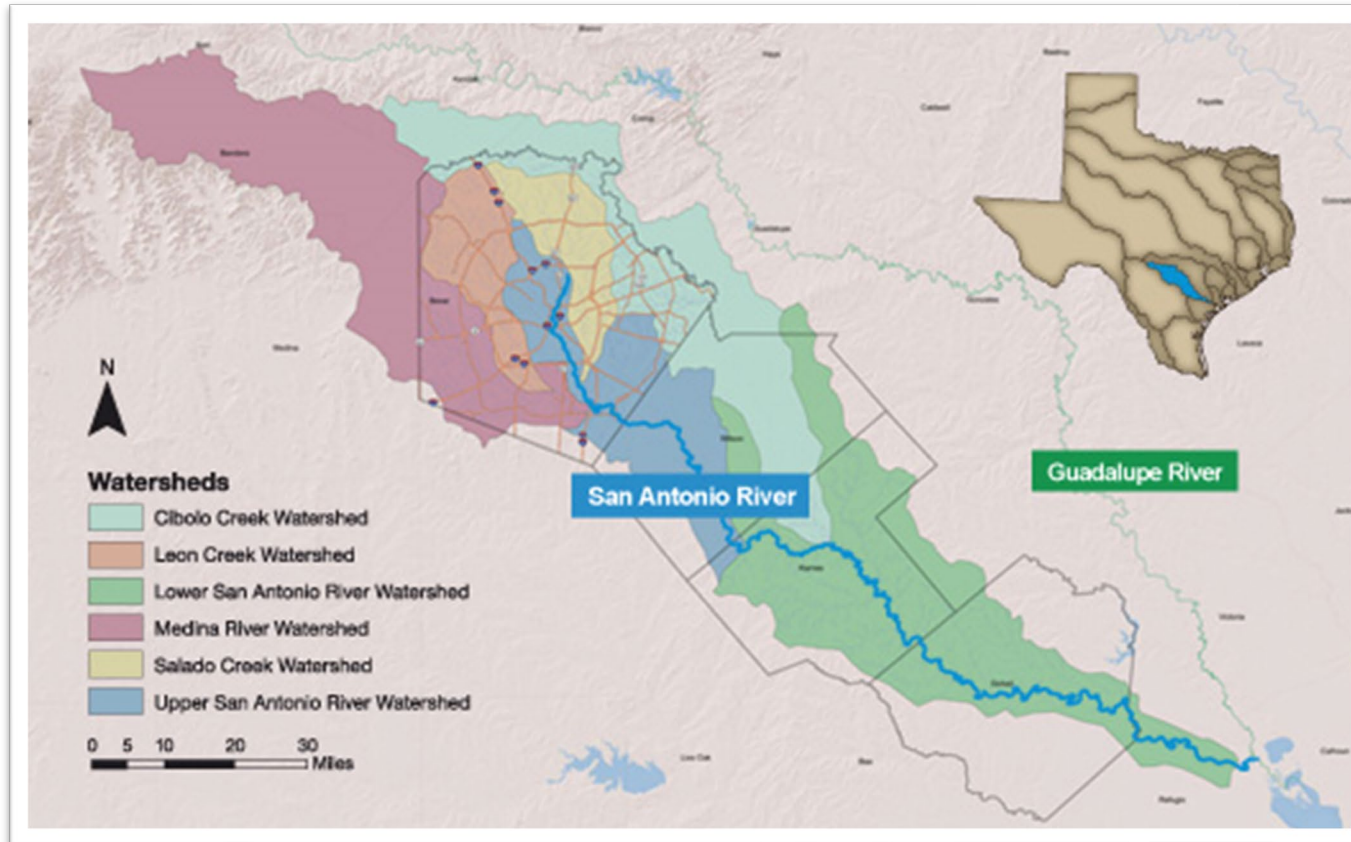


Leon Creek- South Bexar County

- Respond, investigate, and monitor incidents or accidents that have the potential to threaten human health and degrade aquatic resources
- Collect water samples when needed and have analysis performed by SARA's Regional Environmental Laboratory or outsource to a private laboratory.



Surveillance and Patrol



Surveillance and Patrol



Robinson R44 four-seat light helicopter

Identify:

- Unpermitted crossings
- Illegal activities (e.g., illegal dumping, floodplain modifications)



Surveillance and Patrol



Surveillance Camera



- Solar-charged battery
- High resolution images
- Wireless download
- Customizable voice message
- Operates in total darkness
- Ruggedized construction resistant to vandalism



Emergency Spill Response



Cause: Railcar Overfill

- 208 barrels (42 gallons per barrel)
- Unknown amount into the SAR



Emergency Spill Kits

Oil Based liquid Absorbents



Salvage Drum



Booms

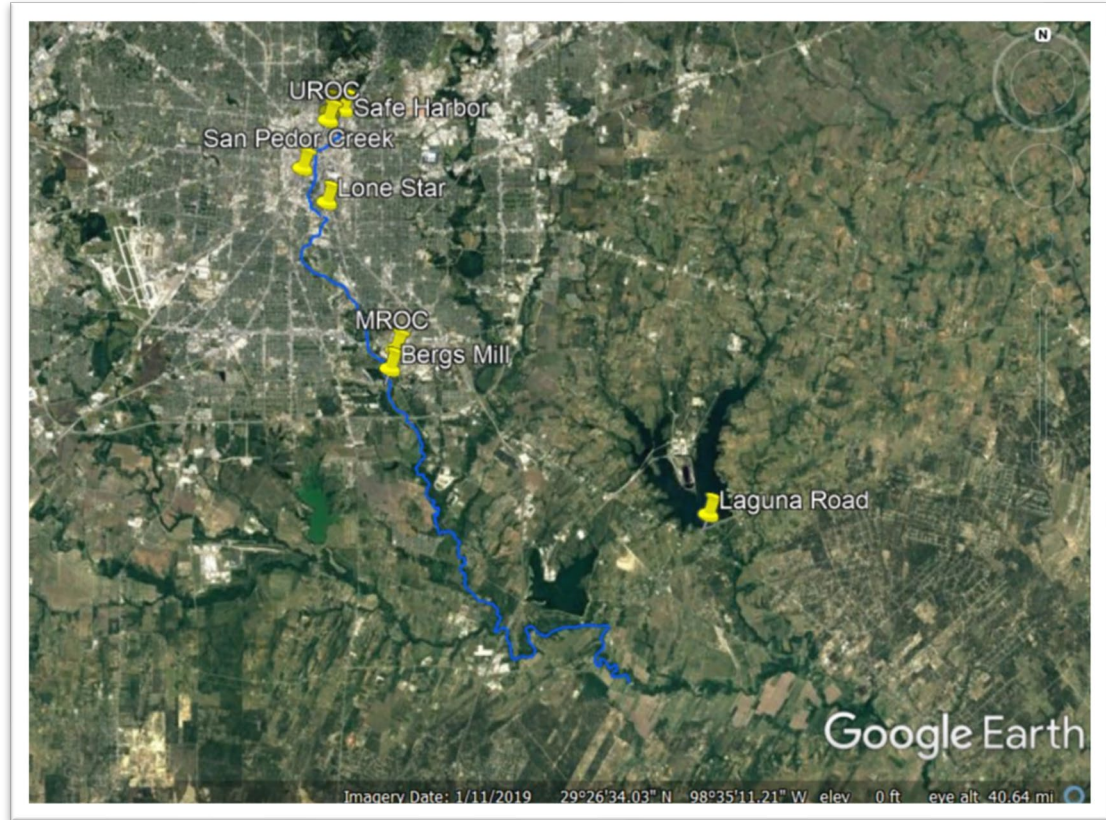


Pads



Spill Kit Locations

- Euclid
- Safe Harbor
- UROC
- San Pedro Creek Facility
- Lone Star Facility
- MROC
- Bergs Mill Facility
- Laguna Road Facility

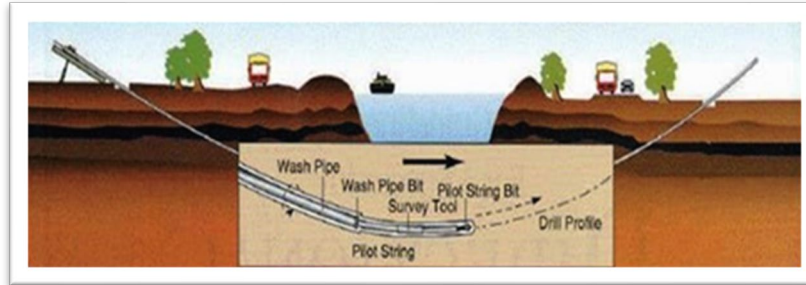


Pipeline Crossings



Horizontal Directional Drilling (HDD)

Pilot Hole

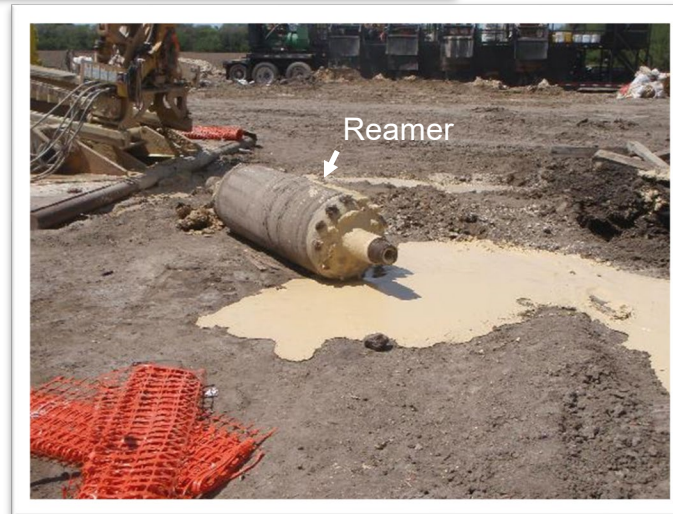
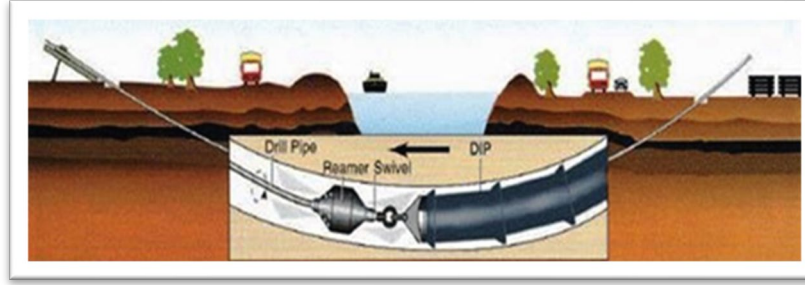


HDD - Minimal Surface Damage



Horizontal Directional Drilling (HDD)

Pull-Back



Phase I Environmental Site Assessment (ESA)



Superfund Site



Phase I Environmental Site Assessment (ESA)

The purpose of an ESA is to identify, to the extent feasible recognized environmental conditions in connection with a property (ASTM E1527-21).

- Records Review – Historical searches
 - chain-of-title (50 year)
 - federal, state, and local governmental records aerial photographs (1930's to Present)
 - Sanborn Fire Insurance Maps (1866 -1977)
 - Previous environmental reports
- Site Reconnaissance
- Interviews
- Report



Questions?

