



CRP

December 15, 2023



Texas Clean Rivers Program (CRP)

- Administered by the Texas Commission on Environmental Quality

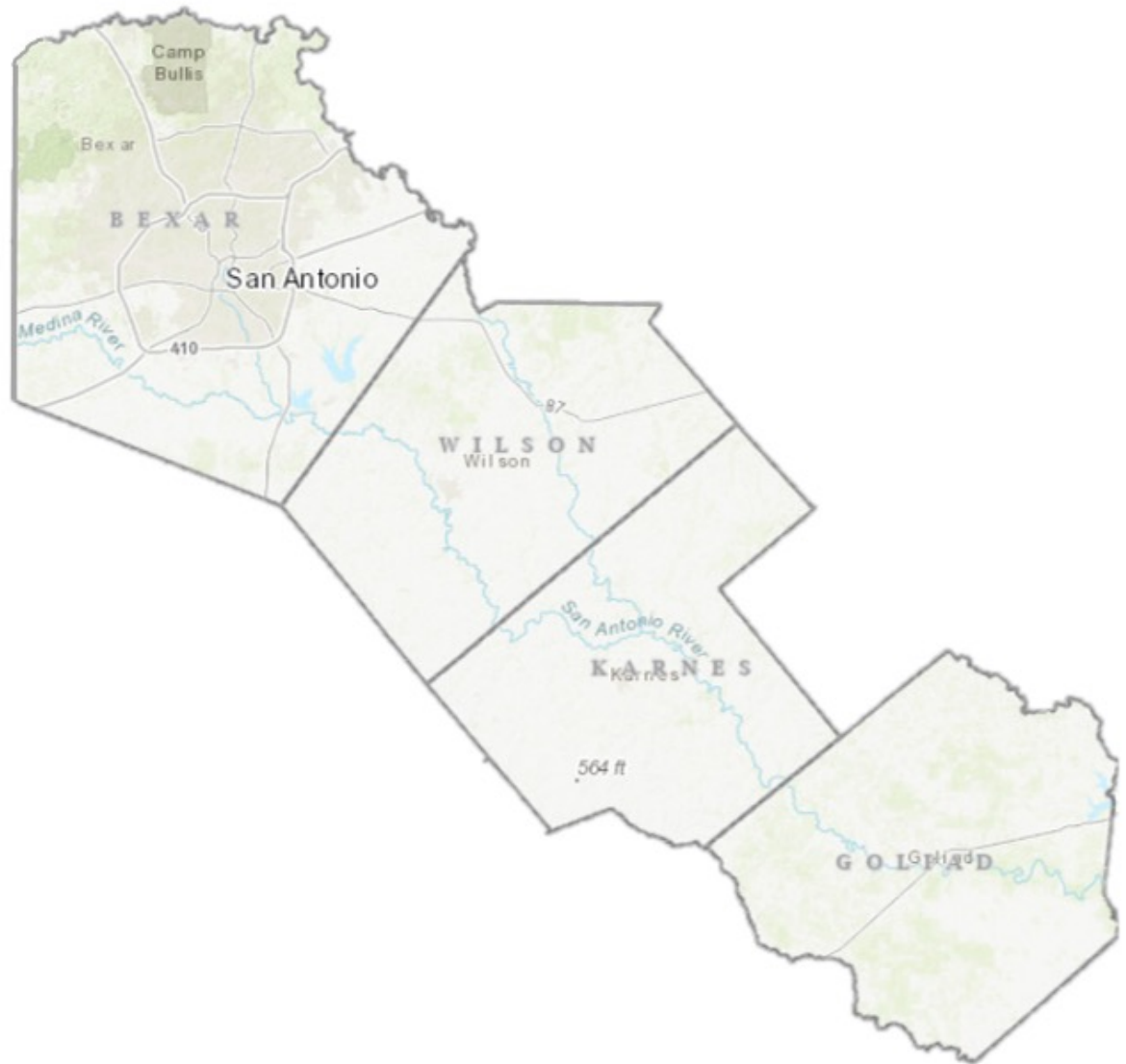


Tasks

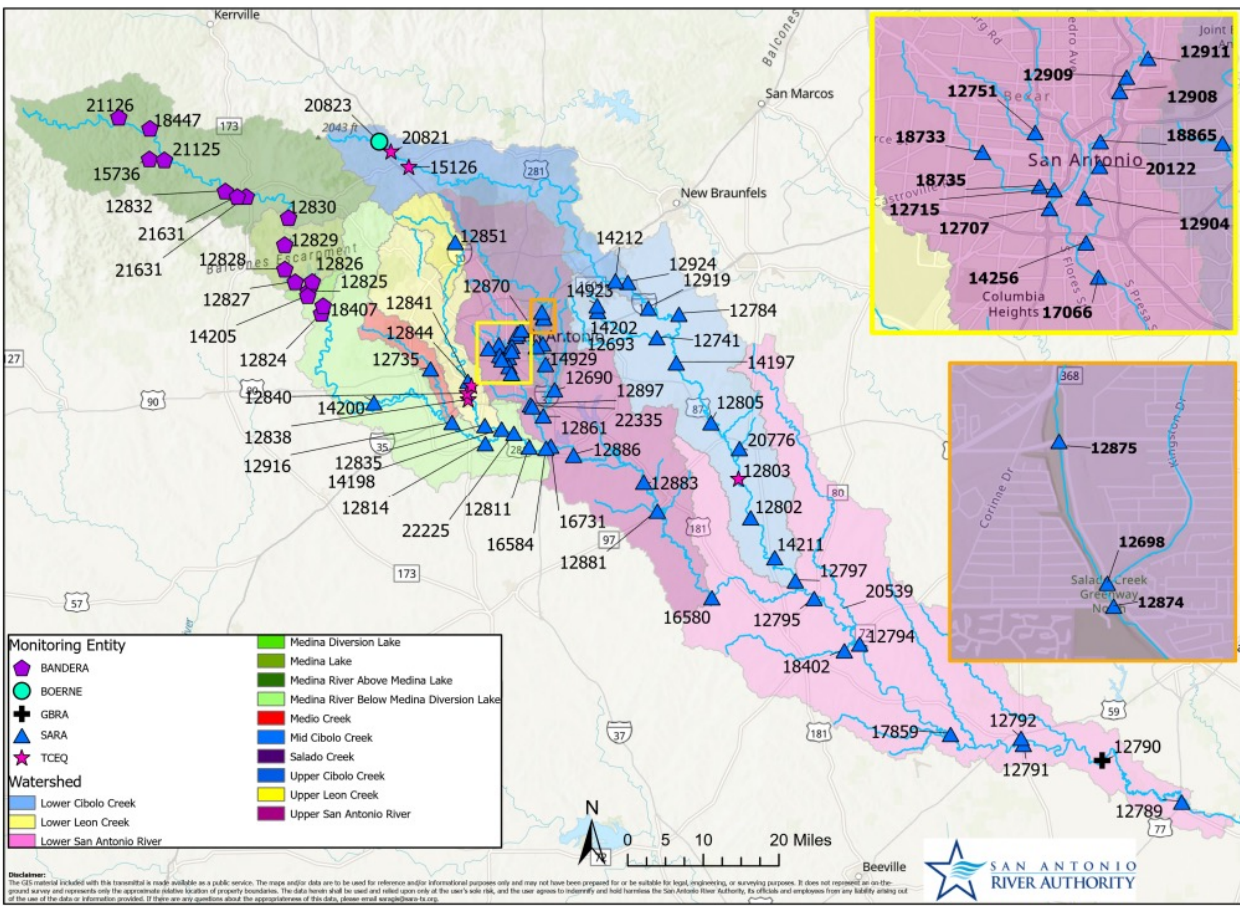
- Administration
- Quality Assurance
- Monitoring
 - Sampling, Biological Communities, Laboratory Analysis
- Data Management
- Data Analysis and Reporting
- Stakeholder Participation and Public Outreach



San Antonio River Authority District



Sept. 1, 2023
to
Aug. 31, 2024



CRP Sampling

	Conventional Sites	Fish Sites	Macroinvertebrate Sites	Diurnal DO Sites
SARA	57	14.5	7	20
BCRAGD	16	0.5		
Boerne	1			
GBRA	1			
TCEQ	6			
Total	81	15	7	20





<https://cms.lcra.org/>

San Antonio River Basin

The San Antonio River originates in Brackenridge Park in San Antonio and flows southeastward to its confluence with the Guadalupe River near the Gulf Coast. San Antonio, the third-largest city in the state, is the largest metropolitan area in the basin. The total basin drainage area is 4,180 square miles. Principal tributaries to the San Antonio River include the Medina River, Leon Creek, Cibolo Creek, and Salado Creek. The San Antonio River Basin has been divided into 13 classified segments, including 11 stream segments encompassing 611 stream miles and two reservoirs encompassing 6,075 acres.

[Click here to view all sites.](#)

Choose Schedule FY:
(Fiscal Year is September 1-August 31)

2024 ▼



Basin 1 - Canadian River
Basin 2 - Red River
Basin 3 - Sulphur River
Basin 4 - Cypress Creek
Basin 5 - Sabine River
Basin 6 - Neches River
Basin 7 - Neches-Trinity Coastal

Basin 14 - Colorado River
Basin 15 - Colorado-Lavaca Coastal
Basin 16 - Lavaca River
Basin 17 - Lavaca-Guadalupe Coastal
Basin 18 - Guadalupe River
Basin 19 - San Antonio River
Basin 20 - San Antonio-Nueces Coastal

TCEQ Region 1
TCEQ Region 2
TCEQ Region 3
TCEQ Region 4
TCEQ Region 5
TCEQ Region 6
TCEQ Region 7
TCEQ Region 9
TCEQ Region 10
TCEQ Region 11
TCEQ Region 12
TCEQ Region 13
TCEQ Region 14
TCEQ Region 15

EAC/CRP March Steering Committee

- Invite other stakeholders to the meeting
- Go over the program in detail



March Steering Committee

- Prior to the meeting send out a questionnaire:
 - Topics you would like to hear about in the future.
 - Water quality issues you are concerned about.
 - Locations you would like us to sample.



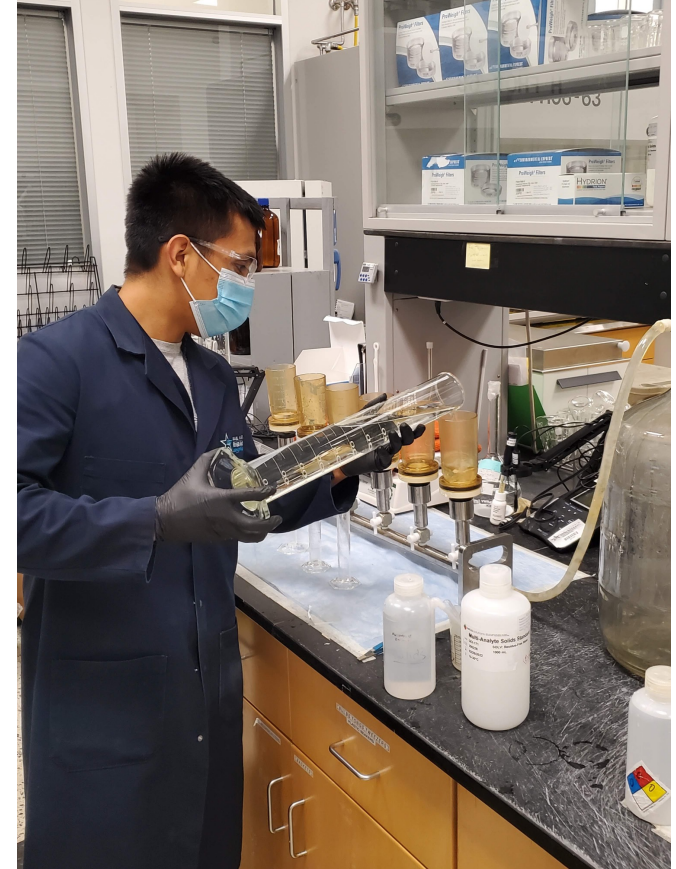
Basin Highlight Report (Program Update Report)

- Ask you to review the draft report and provide comments.



SARA Stream Monitoring

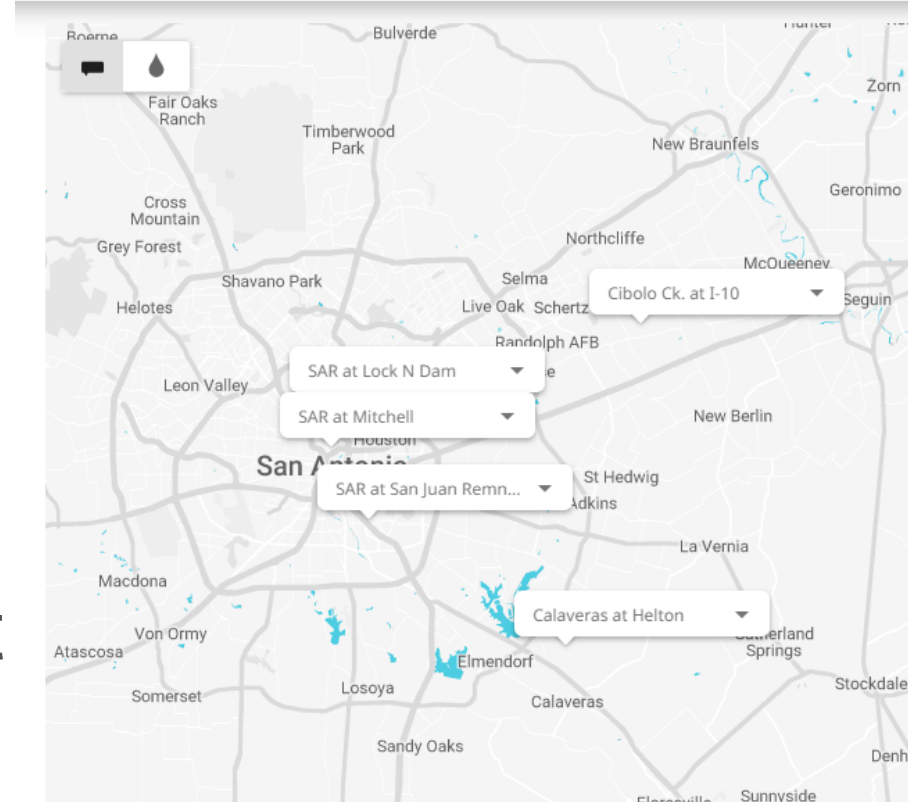
- Calaveras Creek
- Zoo Discharge #1
- Woodlawn Lake Boat Dock
- Apache Creek @ San Luis Street
- Salado Creek at Loop 13
- Salado Re-use
- Cassin Lake Headwaters
- Cassin Lake at Dam



SARA Stream Monitoring



- Calaveras at Helton
- Cibolo Creek at IH10
- SAR at Lock N Dam
- SAR at Mitchell
- SAR at San Juan Remnant





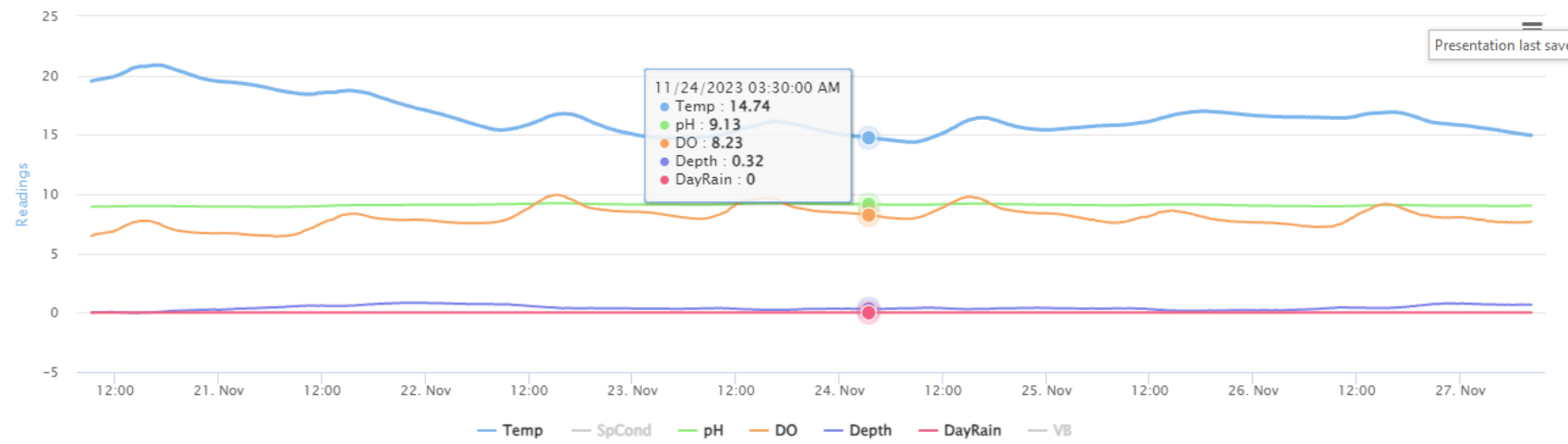
- All public sites
- Calaveras at Helton
- Cibolo Ck. at I-10
- SAR at Lock N Dam
- SAR at Mitchell
- SAR at San Juan Remnant

Calaveras at Helton

Chart View Table View Site Information

Parameters Studies Last Week

Y-axis scaling Min Max Clear



Select All

Add Chart

Stormwater

- Medina River at HWY 16
- Elmendorf Lake Park BMP
- Atlanta Street BMP*
- San Antonio River at Floresville**
- Calaveras Creek at Helton Nature Park



Questions?

Rebecca Reeves
Senior Quality Control and
Monitoring Scientist
reeves@sariverauthority.org

