



# Helton Nature Park

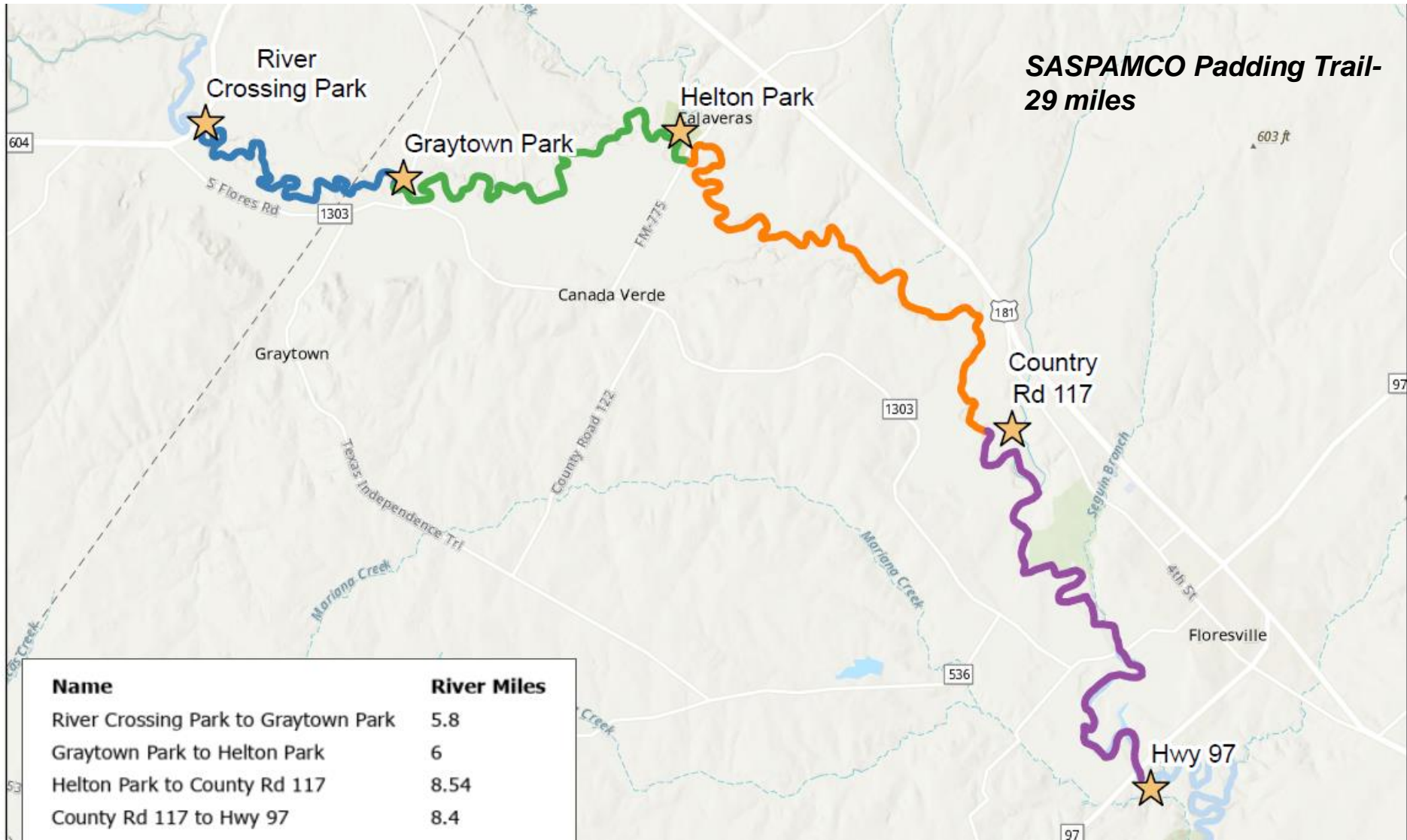
September 16, 2022



# SASPAMCO Paddling Trail

- 29- mile paddling trail that begins at River Crossing Park (1604 & SAR) and ends at Floresville River Park (Hwy 97 & SAR)
- WPO manages this area similar to our hike and bike trails.
  - Log jam removal
  - Portage point maintenance







WELCOME  
TO  
**RIVER  
CROSSING  
PARK**

- RIVER CROSSING ➡ GRAYTOWN PARK**

**PORTAGE PROBABILITY**

  - Little to no portaging
  - Portaging possible
  - Substantial portaging

**ESTIMATED SPEED**

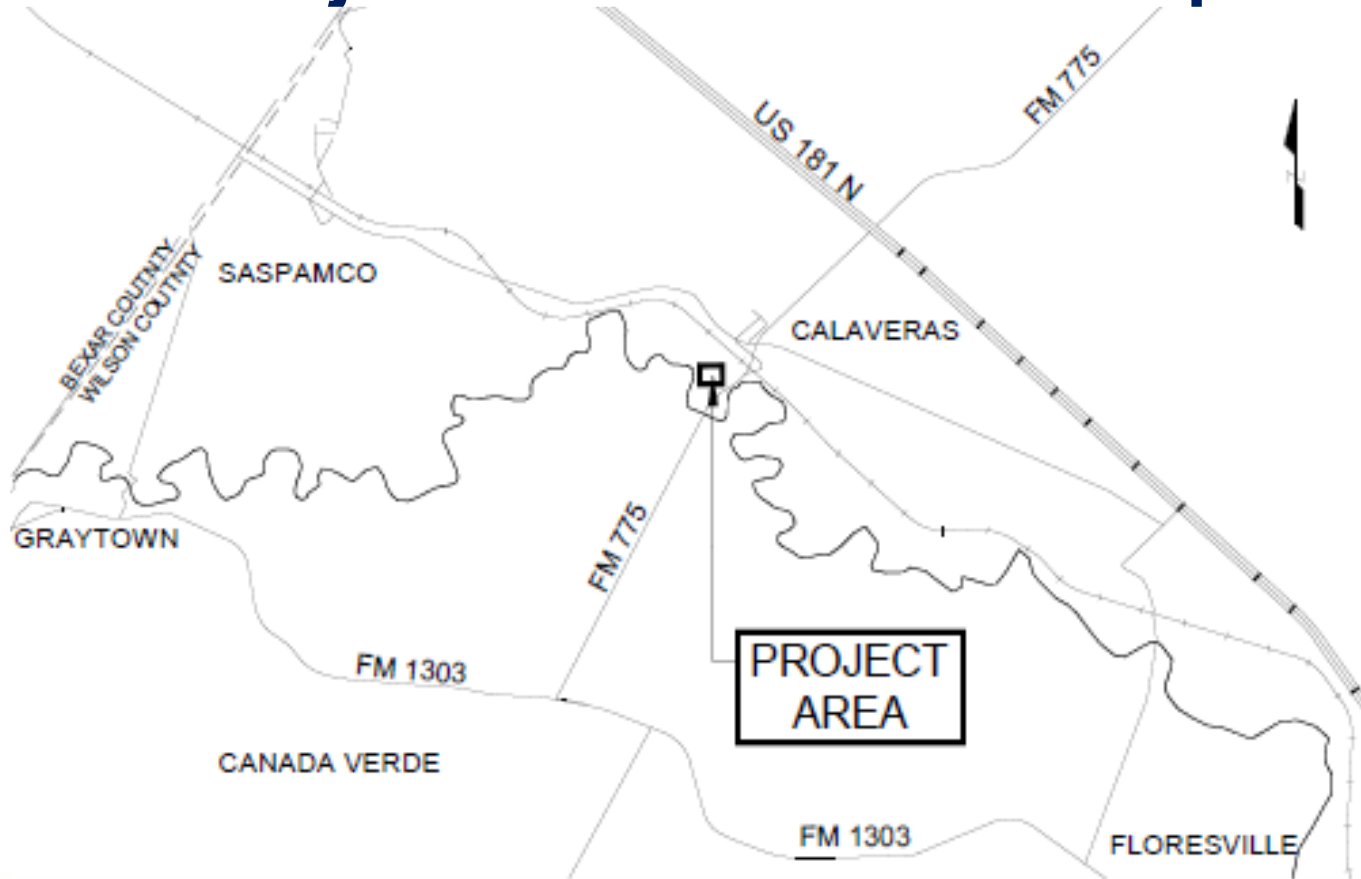
  - Slow 0.5-1 mph
  - Moderate 1-2 mph
  - Quick 3-5+ mph

**EMERGENCY ACCESS**

  - Good emergency access  
Apart from the river access
  - Minimal emergency access  
A couple of blocks away
  - No emergency access  
6+ miles from services



# Project Location Map



# Project Overview

- Provide service ramp for Helton barge
  - River maintenance (clearing debris/log jams)
- River Access for emergency response personnel







**Committed to Safe, Clean, Enjoyable Creeks and Rivers.**

# Project Overview

- Installation of concrete boat ramp
  - 50 ft length, 20 ft wide
- SARA staff designed in-house
- Approved Permits (USACE, and local county floodplain development permit)





# Concrete Ramp Pour – June 21





# Side Slope Stabilization - July 15





# Side Slope Stabilization - July 15





# Ramp Completed – July 26



# Questions?

