



2021 Clean Rivers Program Steering Committee Meeting

March 12, 2021, 9 a.m. to 12 noon



Agenda

- CRP Overview
- Draft FY21 Clean Rivers Basin Highlights Report
- Allocation of Resources
- 2020 Integrated Report
- Coordinated Monitoring Meeting - Coordinated Monitoring Schedule



CRP Overview



- Established in 1991 by the 72nd Legislature enactment of Senate Bill 818.
- Coordinates the regional monitoring resources to identify and address the water quality issues in the San Antonio River Basin.
- SARA, TCEQ, BCRAGD, and the City of Boerne monitor water quality in the San Antonio River Basin.
- Provide quality assured data to the TCEQ for use in water quality decision making.



CRP Mission

Working together for clean water and science-based decisions

Goal

Maintain and improve the quality of water within each river basin in Texas through an ongoing partnership involving the Texas Commission on Environmental Quality, river authorities, other agencies, regional entities, local governments, industry and citizens.



Mayfly larvae or nymph



CRP Objectives



2020 Michael Gonzales Memorial Intern, Sarah Mock, Spotted Gar, Salado Creek Watershed

- Provide Quality-Assured Data
- Identify and Evaluate Water Quality Issues
- Promotes Cooperative Watershed Planning
- Maintain Efficient Use of Public Funds
- Adapt Program to Emerging Water Quality Issues



2021 Clean Rivers Basin Highlights Report

- Review activities in the San Antonio River Basin
- 2020 TCEQ Integrated Report WQ Impairments and Concerns
- Projects and studies
- Stakeholder Participation & Public Outreach



2021 Clean Rivers Basin Highlights Report

- Draft Report – February 15, 2021
- Final Report – May 15, 2021
- Posted the SARA's web page – June 30, 2021
<https://www.sariverauthority.org/services/environmental-sciences/basin-reports>



Allocation of Resources



Station 21631 Medina River at Mayan Ranch, SARA
and BCRAGD biological collection event.



FY18-22 Four-Year Contract

Categories	Original FY18/19 CRP Agreement	Revision #1 \$151,841.00	Revision #2 \$25,000.00	Revision #3 \$544,540.00
a. Personnel / Salary	\$240,900.00	\$259,825.00	\$276,716.89	\$617,622.29
b. Fringe Benefits (38% of Labor)	\$91,542.00	\$98,733.50	\$105,152.42	\$234,696.48
c. Travel	\$8,008.00	--	--	\$9,000.00
d. Supplies	\$28,000.00	\$28,000.00	\$29,000.00	\$57,000.00
e. Equipment	--	\$31,840.00	\$31,840.00	\$31,840.00
f. Contractual	--	--	--	--
g. Other	\$3,000.00	\$3,000.00	\$3,000.00	\$6,000.00
h. Total Direct Costs (sum a-g)	\$371,450.00	\$421,398.50	\$445,709.31	\$956,158.77
i. Indirect costs (10% of Labor)	\$24,090.00	\$25,982.50	\$27,671.69	\$61,762.23
j. Total Reimbursable Costs (h+i)	\$395,540.00	\$447,381.00	\$473,381.00	\$1,017,921.00





North Prong of the Upper Medina
River at Brewington Road

CRP Work Plan

- TASK 1: Project Administration
- TASK 2: Quality Assurance
- TASK 3: Water Quality Monitoring
- TASK 4: Data Management
- TASK 5: Data Analysis and Reporting
- TASK 6: Stakeholder Participation and Public Outreach



New FY22/23 CRP Contract

- No capital equipment budgeted.
- In general, routine monitoring will be conducted 6/year.
- No Special Projects are anticipated.
- Contract period will be Sept 2021 through Aug 2023.
- Monitoring stations may decrease as a result of the April 2021 Coordinated Monitoring meeting.

PROJECT NAME:	FY 2022/2023 Clean Rivers Program		
TEXAS TAX ID NUMBER:	746-0113-115	RECIPIENT ORGANIZATION San Antonio River Authority 600 East Euclid Ave. PO Box 839980	
TOTAL PROJECT Period:	9/1/2021 through 8/31/2023		
BUDGET CATEGORIES*	FY 2022 9/1/21 - 8/31/22	FY 2023 9/1/22 - 8/31/23	FY22 - FY23 TOTAL
a. Personnel/Salary	\$ 191,675.67	\$ 63,891.89	\$ 255,567.56
b. Fringe Benefits (38% of a.)	\$ 72,836.76	\$ 24,278.92	\$ 97,115.68
c. Travel	\$ 300.00	---	\$ 300.00
d. Supplies	\$ 14,000.00	---	\$ 14,000.00
e. Equipment	---	---	---
f. Contractual	---	---	---
g. Other	\$ 1,000.00	\$ 2,000.00	\$ 3,000.00
h. Total Direct Costs (sum a-g)	\$ 279,812.43	\$ 90,170.81	\$ 369,983.24
i. Indirect costs (10% x a.)	\$ 19,167.57	\$ 6,389.19	\$ 25,556.76
j. Total Reimbursable Costs (h+i)	\$ 298,980.00	\$ 96,560.00	\$ 395,540.00



TCEQ 2020 Texas Integrated Report (IR)



TCEQ 2020

Texas Integrated Report (IR)

- Texas 303(d) List
- Index of Water Quality Impairments
- Water Bodies Evaluated
- Water Body Assessments by Basin
- Supplemental Data for Reservoir Nutrient Assessment
- Water Bodies with Concerns for Use Attainment and Screening Levels
- Potential Sources of Pollution for Impairments and Concerns
- New Listings and 2020 De-listings
- Guidance for Assessing and Reporting Surface Water Quality in Texas



TCEQ 2020 Integrated Report

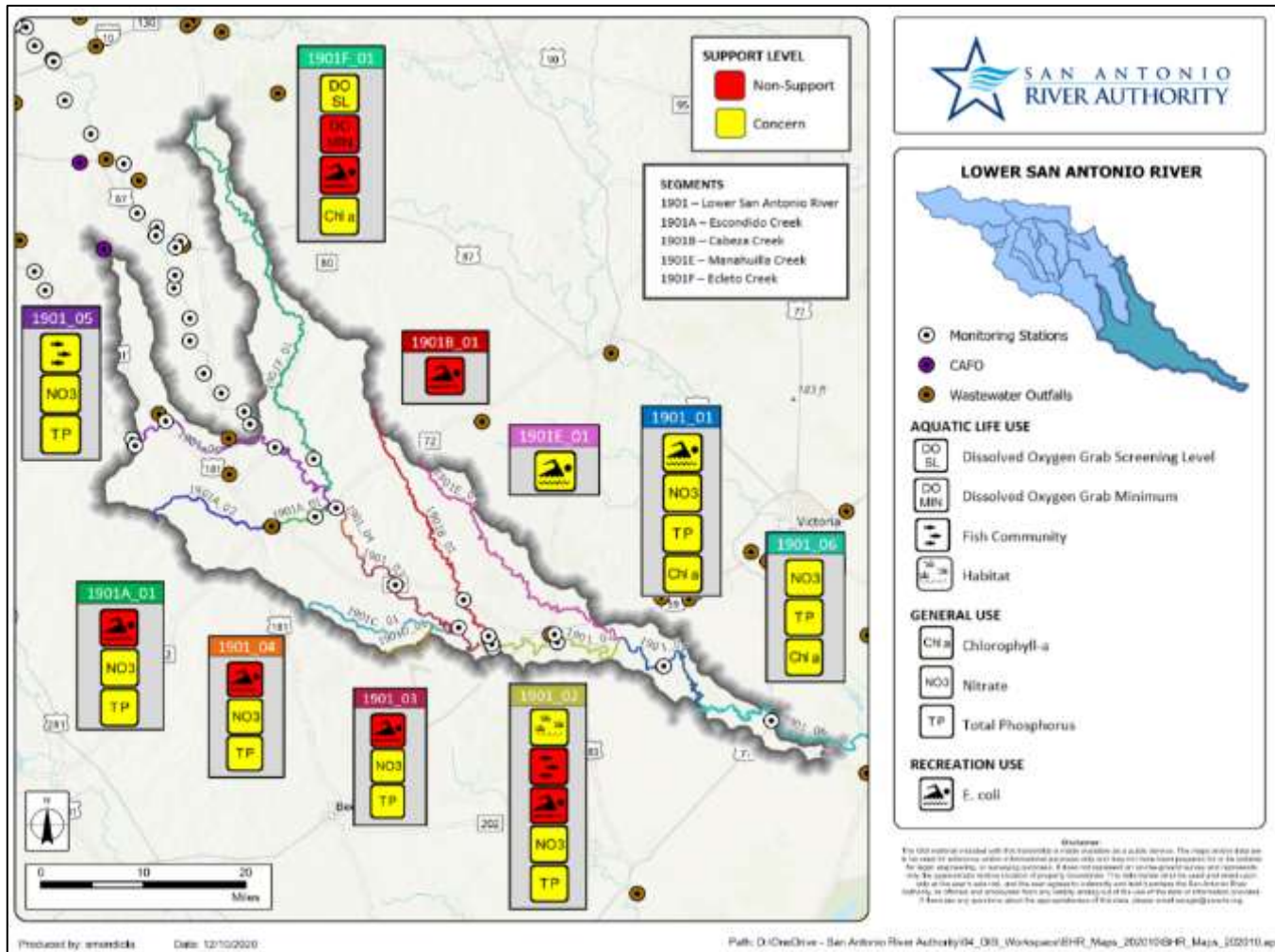
Five new impairments

- Bacteria → Ecletto Creek and Upper Medina River
- Fish Community → Salado Creek
- Benthic Community → Salado Creek and the Upper San Antonio River

Three waterbodies removed

- Bacteria → Lower Leon Creek (1906_03)
- Fish Community → Lower Cibolo Creek (1902_03) and Upper Medina River (1905_01)





Segments

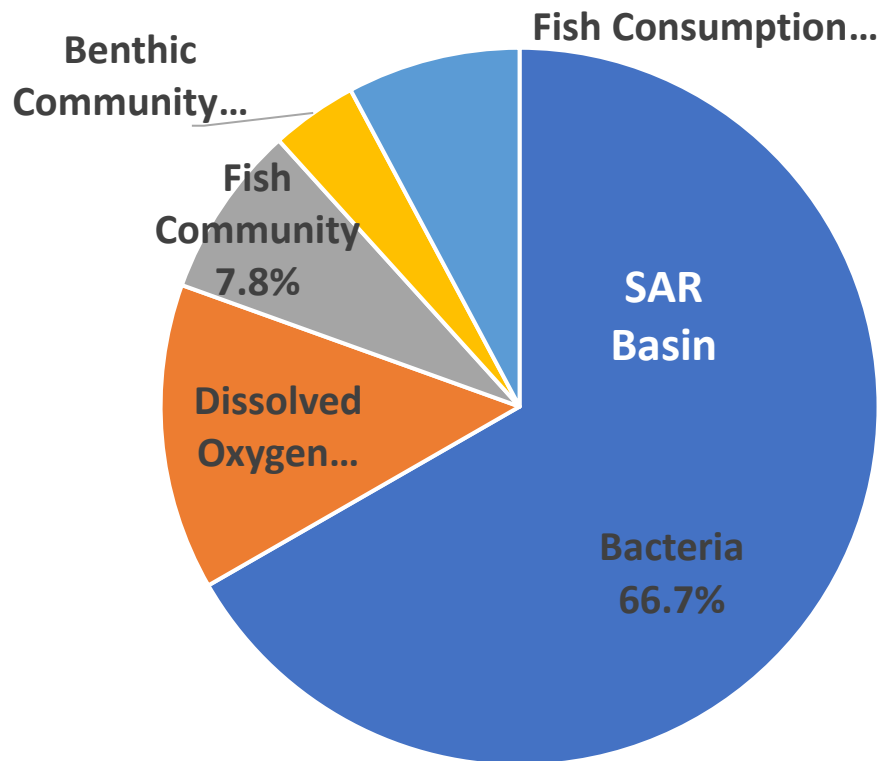
- Aquatic Life Use
- Recreation Use
- General Use
- Fish Consumption Use
- Public Water Supply Use

Assessment Unit
The Integrated Report reports impairments/concern at the Assessment Unit Level



TCEQ 2020 IR SAR Basin Assessment Unit Impairments

2020 Impairments in the SAR Basin		
Impairments	Number of Impaired AUs	AU Impairment Percentages
Bacteria	34	66.7%
Dissolved Oxygen	7	13.8%
Fish Community	4	7.8%
Benthic Community	2	3.9%
Fish Consumption	4	7.8%
Total Impaired AUs	51	100.0%



CRP Coordinated Monitoring Meeting



Station 20821 Upper Cibolo Creek at Northrup Park



CRP Coordinated Monitoring Meeting

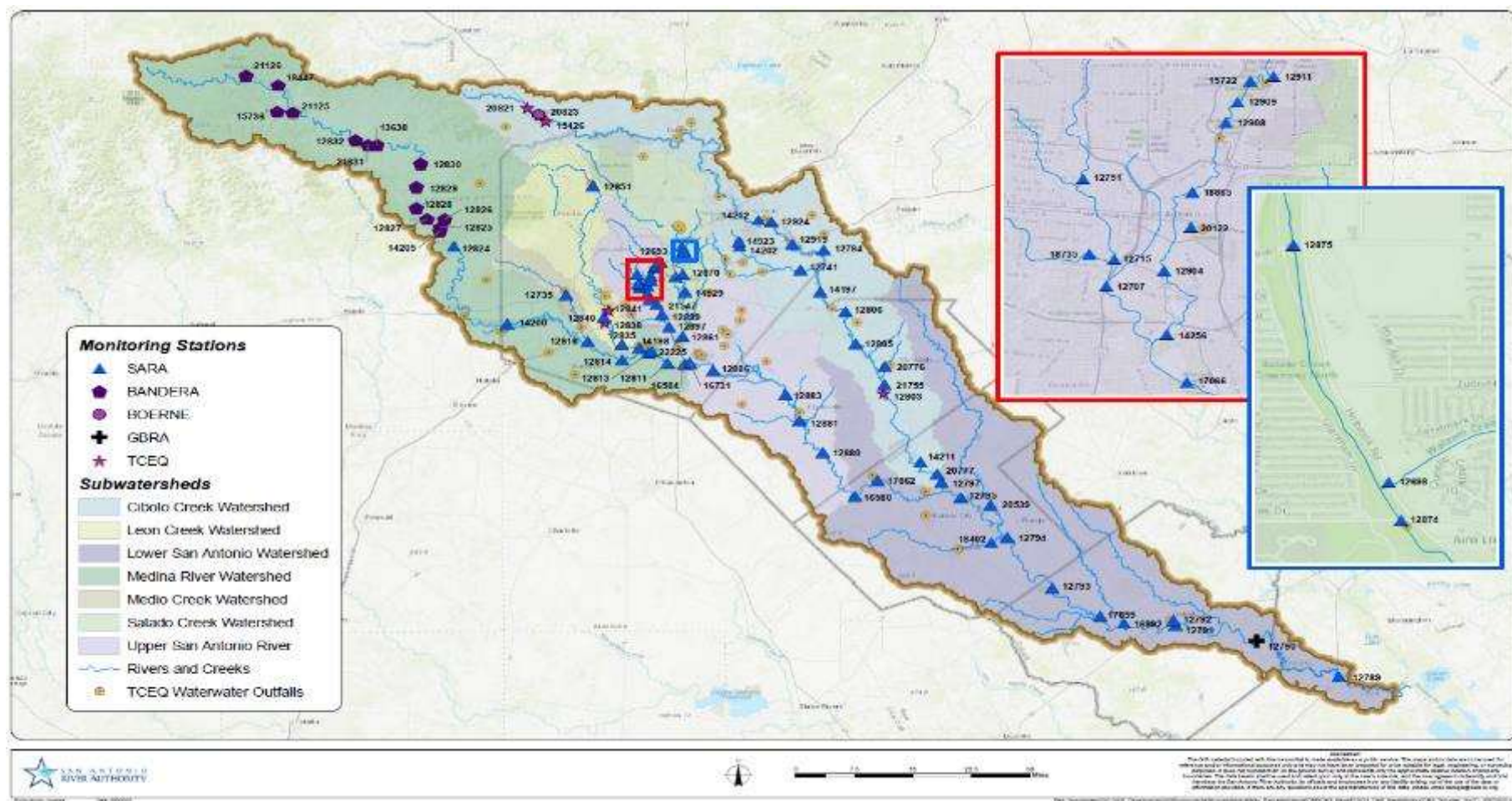
- Leverage funds, maximizing regional efforts, prevents duplication of efforts
- Provides spatial and temporal distribution of monitoring efforts
- <https://cms.lcra.org/>



CRP Coordinated Monitoring Schedule

FY20				Watershed	FY21				
SARA CRP	Partners	Total Sites Monitored	Biological Nekton		SARA CRP	Partners	Total Sites Monitored	Biological Nekton	
12	1-GBRA	13	4	Segment 1901: Lower San Antonio River	12	1-GBRA	13	4	
14	1-TCEQ	15	4	Segment 1902: Lower Cibolo Creek	12	1-TCEQ	13	5	Dropped 2 Clifton Branch Dissolved Oxygen only stations. Added 1 biological (benthic only)
6	0	6	2	Segment 1903: Lower Medina River	7	0	7	2	Added one bacteria station
0	5-BCRAGD	5	0	Segment 1904: Medina Lake	0	5-BCRAGD	5	0	
0	8-BCRAGD	8	2	Segment 1905: Upper Medina River	0	8-BCRAGD	8	2	
3	2-TCEQ	5	2	Segment 1906: Lower Leon Creek	3	2-TCEQ	5	2	
3	0	3	0	Segment 1907: Upper Leon Creek	1	0	1	0	Dropped 2 flow only stations
2	1-TCEQ	3	2	Segment 1908: Upper Cibolo Creek	0	2-TCEQ 1-Boerne	3	0	Dropped 2 biological events
0	1-BCRAGD	1	0	Segment 1909: Medina Diversion Lake	0	1-BCRAGD	1	0	
7	0	7	4	Segment 1910: Salado Creek	7	0	7	4	
21	0	21	6	Segment 1911: Upper San Antonio River	21	0	21	6	
2	0	2	2	Segment 1912: Medio Creek	2	0	2	2	
3	0	3	0	Segment 1913: Mid Cibolo Creek	3	0	3	0	
73	19	92	28	TOTAL	68	21	89	27	





Segment 1911 – Upper San Antonio River



12908 San Antonio River at Woodlawn



12909 San Antonio River at Mulberry



Segment 1911 – Upper San Antonio River



12899 San Antonio River at Padre Road



18735 Apache Creek at Brazos



Segment 1911 – Upper San Antonio River



12751 Martinez Creek at Ruiz Street



16731 San Antonio River Upstream Medina River
Confluence



Segment 1901 – Lower San Antonio River



16992FM 2043 Cabeza Creek



16580 SAR Conquista Crossing



Segment 1901 – Lower San Antonio River



12793 San Antonio River at SH 239
West of Charco



12792 SAR Pacific RR SE Goliad



Segment 1905 – Upper Medina River



21631 UMR Mayan Ranch



21631 UMR Mayan Ranch



Segment 1905 – Upper Medina River



12830 UMR Old English Crossing



12832 Upper Medina River FM 470



Segment 1904 Medina Lake



1909 Medina Diversion Lake



Segment 1903 Lower Medina River



14200 MR CR 484



12811 MR FH 1937 Near Losoya



Segment 1903 Lower Medina River



12824 Medina River at CR 2615



Segment 1908 Upper Cibolo Creek



20821 Cibolo Creek at Northrup Park



Segment 1913 Mid Cibolo Creek



12924 Mid Cibolo Creek Schaeffer Road



14212 Mid Cibolo Upstream WWTP



Segment 1902 Lower Cibolo Creek



14197 Cibolo Creek Scull Crossing



21755 Cibolo Creek Upstream FM 537



Segment 1902 Lower Cibolo Creek



12741 Martinez Creek Gable Road



Segment 1910 Salado Creek



14929 Salado Creek at Comanche Park



Segment 1910 Salado Creek



12861 Salado Creek at Southton Road



12870 Salado Creek Gembler Road



Segment 1912 Medio Creek



12735 Medio Creek at US 90W



12916 Hidden Valley Campground Medio Creek



Segment 1907 Upper Leon Creek & 1906 Lower Leon Creek



12851 Upper Leon Creek
Raymond Russel Park



14198 Leon Creek Upstream Leon
Creek WWTP



Questions?

Charles J. Lorea, IV
Watershed Monitoring Supervisor
CRP Project Manager
clorea@sariverauthority.org

