



# FY21 Clean River Program Update

September 25, 2020

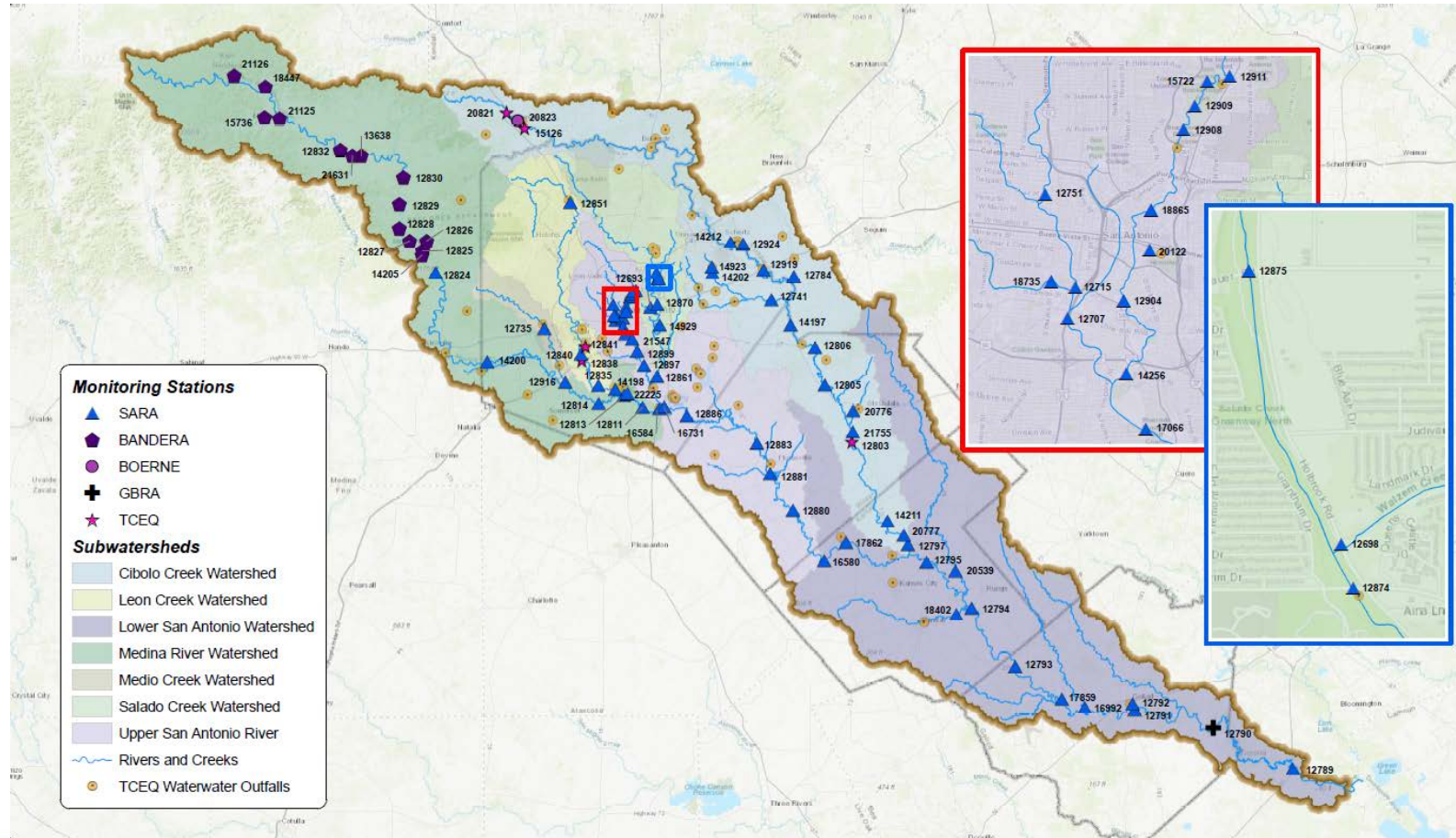


# FY18/21 CRP Budget

Budget Categories:	FY18	FY19	FY20	FY21	Approved Budget
a. Personnel/Salaries	\$153,816.15	\$188,472.60	\$191,134.46	\$61,144.97	\$594,568.18
b. Fringe Benefits (38% of salary)	\$58,450.40	\$70,099.58	\$71,111.08	\$26,274.85	\$225,935.91
c. Travel	\$0.00	\$576.00	\$8,040.16	\$9,383.84	\$18,000.00
d. Supplies	\$11,913.23	\$18,298.71	\$22,994.44	\$8,033.62	\$61,240.00
e. Equipment	\$0.00	\$27,540.00	\$0.00	\$20,180.00	\$47,720.00
f. Contractual	\$0.00	\$0.00	\$0.00	\$0.00	\$0.00
g. Construction	\$0.00	\$0.00	\$0.00	\$0.00	\$0.00
h. Other	\$352.83	\$6,901.64	\$198.44	\$3,547.19	\$11,000.10
i. Total Direct Costs (sum a - h)	\$224,532.61	\$311,888.53	\$293,478.58	\$128,564.47	\$958,464.19
j. Indirect Costs (10% of Salary)	\$15,381.62	\$18,847.55	\$19,113.17	\$6,114.48	\$59,456.81
k. Total (sum i & j)	\$239,914.23	\$330,736.08	\$312,591.75	\$134,678.95	\$1,017,921.00



# FY2021 Coordinated Monitoring



Committed to Safe, Clean, Enjoyable Creeks and Rivers.



# 2021 Monitoring in the SAR Basin

FY20				Watershed	FY21				
SARA CRP	Partners	Total Sites Monitored	Biological Nekton		SARA CRP	Partners	Total Sites Monitored	Biological Nekton	
12	1-GBRA	13	4	Segment 1901: Lower San Antonio River	12	1-GBRA	13	4	
14	1-TCEQ	15	4	Segment 1902: Lower Cibolo Creek	12	1-TCEQ	13	5	Dropped 2 Clifton Branch Dissolved Oxygen only stations. Added 1 biological (benthic only)
6	0	6	2	Segment 1903: Lower Medina River	7	0	7	2	Added one bacteria station
0	5-BCRAGD	5	0	Segment 1904: Medina Lake	0	5-BCRAGD	5	0	
0	8-BCRAGD	8	2	Segment 1905: Upper Medina River	0	8-BCRAGD	8	2	
3	2-TCEQ	5	2	Segment 1906: Lower Leon Creek	3	2-TCEQ	5	2	
3	0	3	0	Segment 1907: Upper Leon Creek	1	0	1	0	Dropped 2 flow only stations
2	1-TCEQ	3	2	Segment 1908: Upper Cibolo Creek	0	2-TCEQ 1-Boerne	3	0	Dropped 2 biological events
0	1-BCRAGD	1	0	Segment 1909: Medina Diversion Lake	0	1-BCRAGD	1	0	
7	0	7	4	Segment 1910: Salado Creek	7	0	7	4	
21	0	21	6	Segment 1911: Upper San Antonio River	21	0	21	6	
2	0	2	2	Segment 1912: Medio Creek	2	0	2	2	
3	0	3	0	Segment 1913: Mid Cibolo Creek	3	0	3	0	
73	19	92	28	TOTAL	68	21	89	27	





# 2021 CRP San Antonio River Basin Highlight Report

- What were the major events or occurrences during the 2020 year
- Water quality monitoring, impairments and concerns
- Projects and studies
- Stakeholder Participation & Public Outreach



# 2021 CRP San Antonio River Basin Highlight Report Timeline

Draft Report – February 15, 2021

Final Report – May 15, 2021



Young Flathead Catfish, biological monitoring event at 16580 San Antonio River at Conquista Crossing







# QUESTIONS

Charles J. Lorea, IV  
Watershed Monitoring Supervisor  
CRP Project Manager  
San Antonio River Authority  
[clorea@sariverauthority.org](mailto:clorea@sariverauthority.org)

# Questions?

